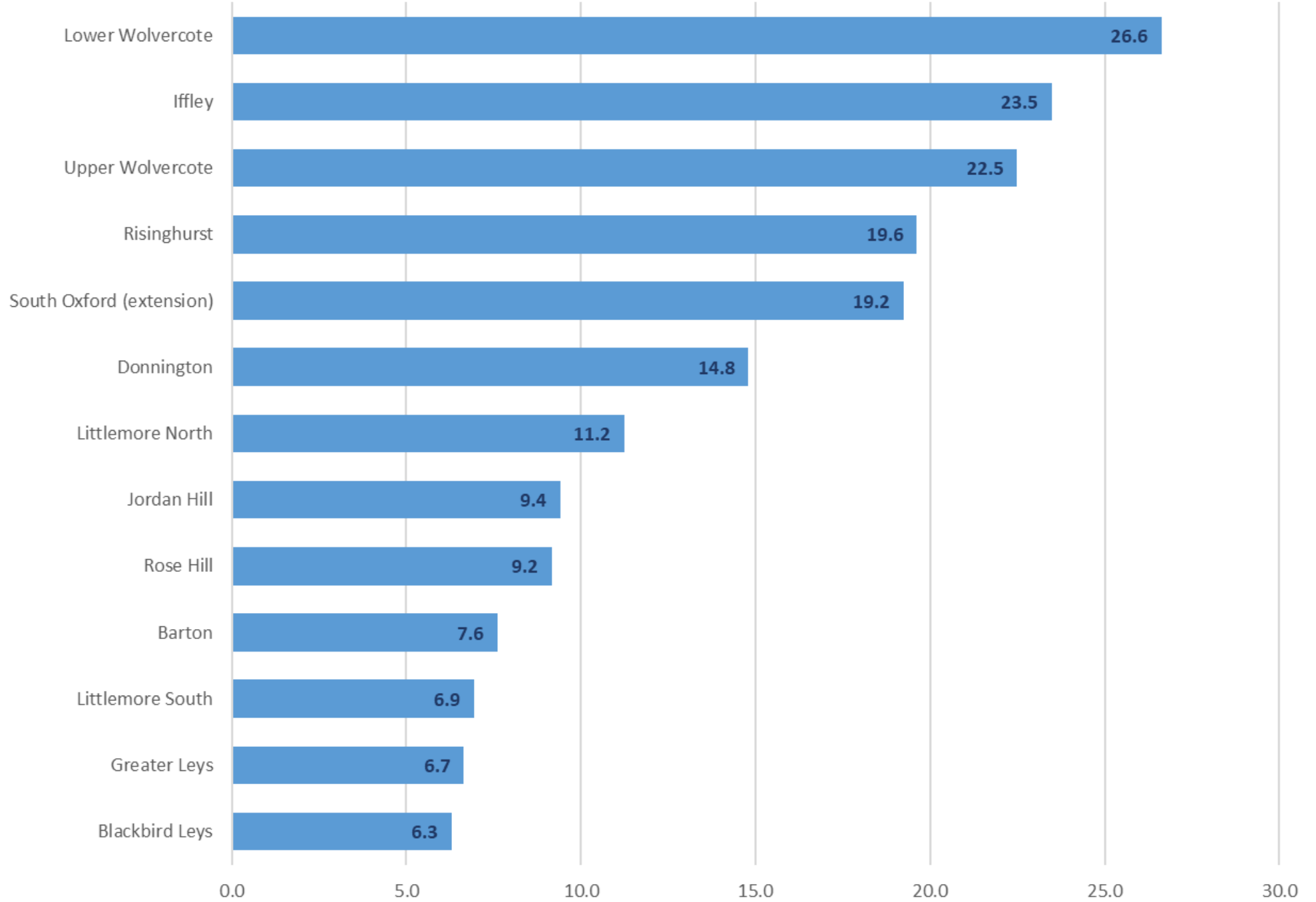


Consultation Summary:

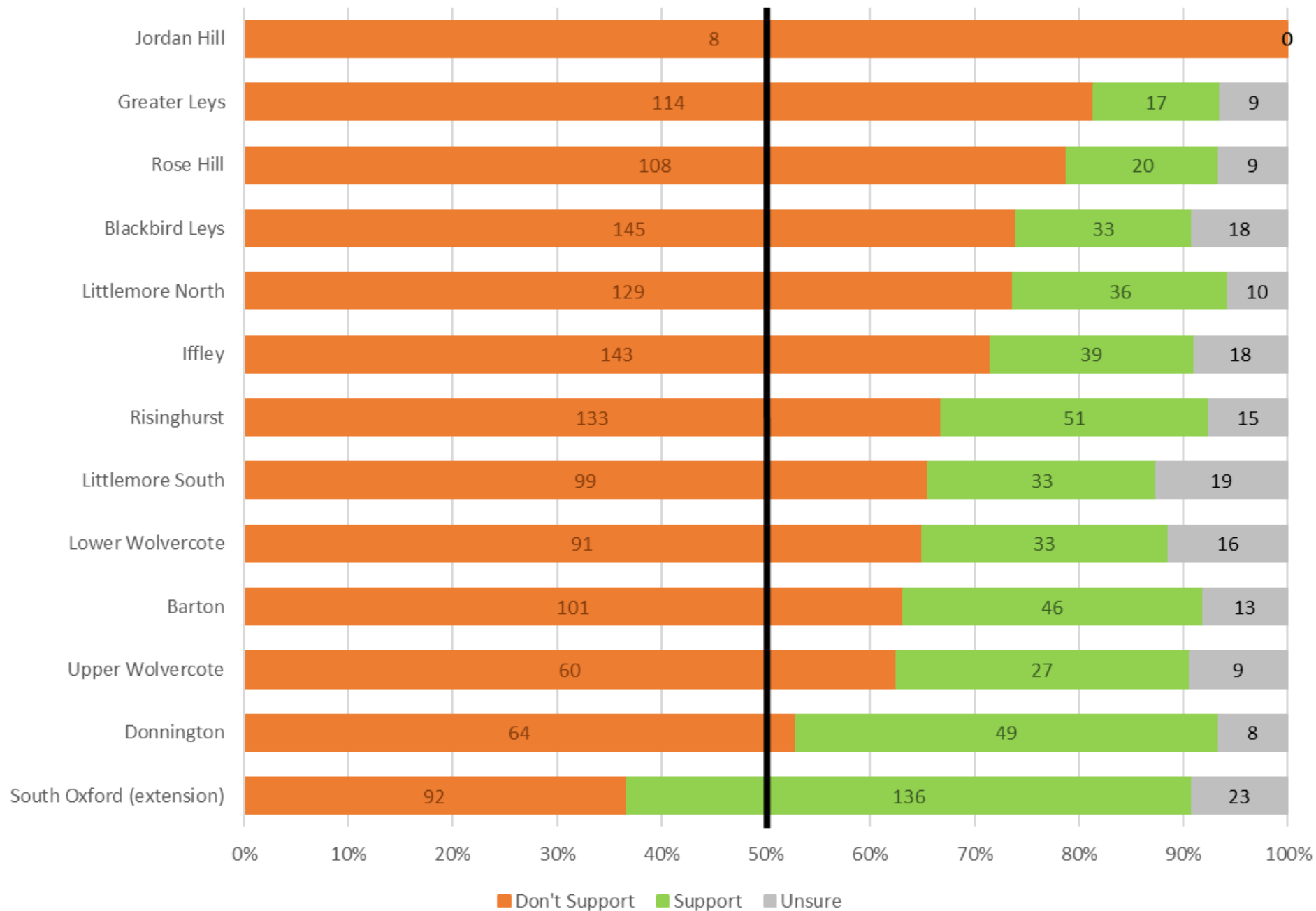
- Consultation carried out between 05th February & 05th March 2021.
- 17,587 letters sent directly to residents.
- 2,022 responses* were received:
 - 1,850 of which came via the online portal (91% of all responses).
 - * 172 (48 of which contained general comments or queries) other responses were received in letter/email format but not in a comparable format for the detailed analysis.*
- Giving an overall total response rate of approximately **11.5%**
 - *(broadly in line with the online response rate of the 2018 informal consultations)*

CPZ Informal Consultation - Calculated Response Rate



CMDE5

CPZ Informal Consultation - Level of Support

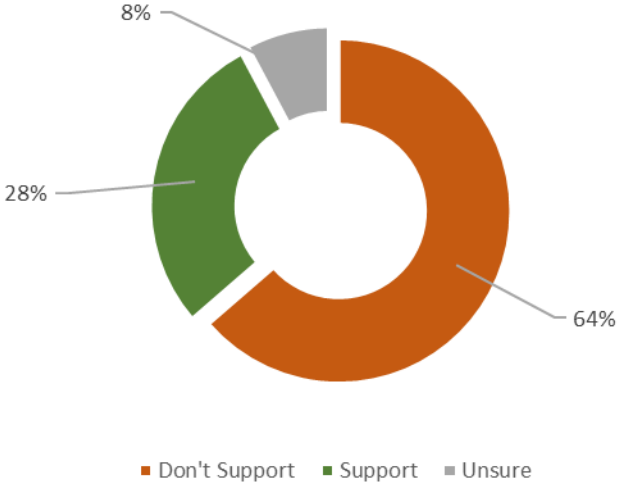


CMDE5

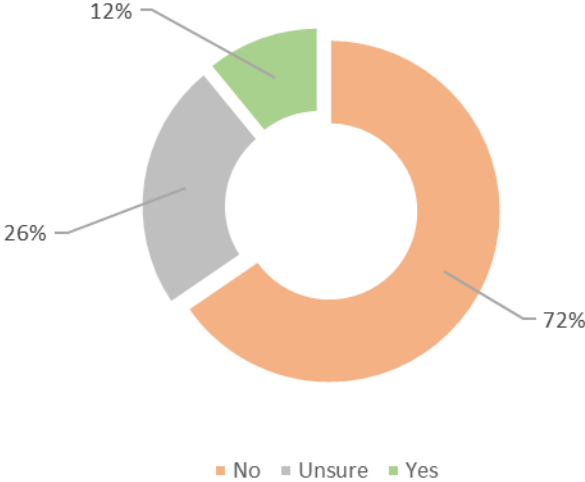
Barton (*online responses only*):

CMDE5

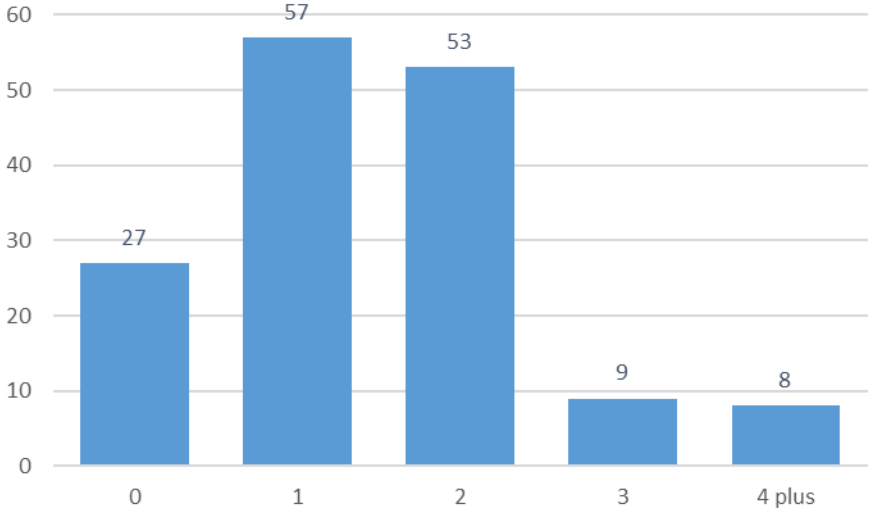
Do you support the introduction of a CPZ ?



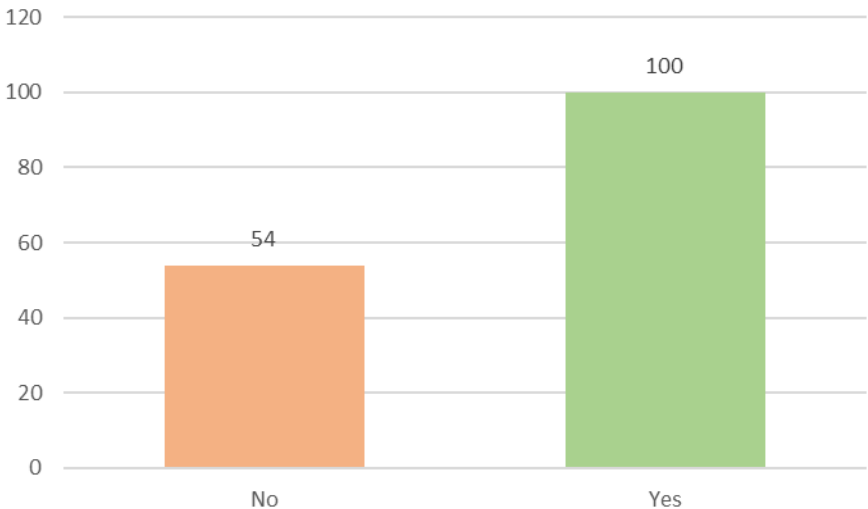
If not, do you think one may be necessary in future ?



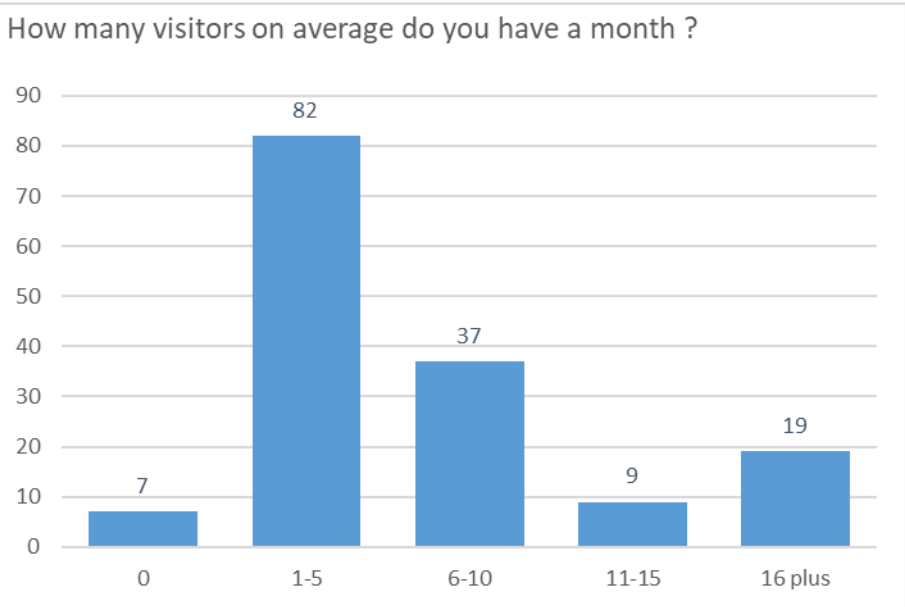
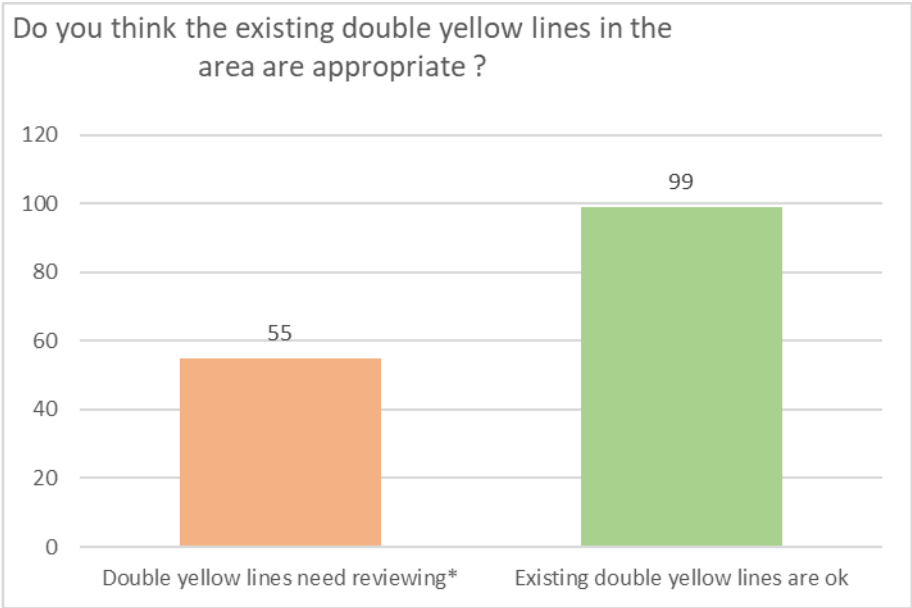
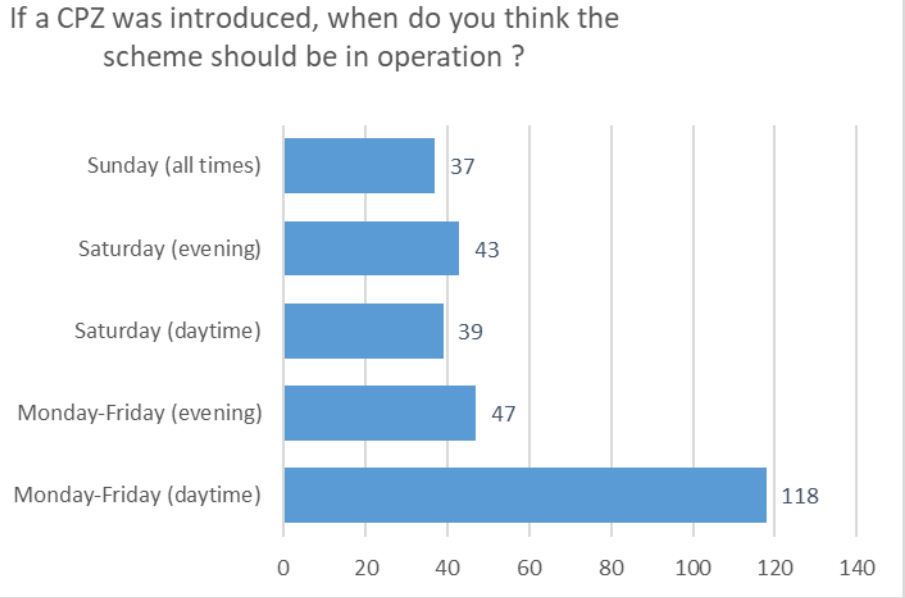
How many cars / vans are currently owned ?



Do you have access to private/off-street parking ?



CMDE5

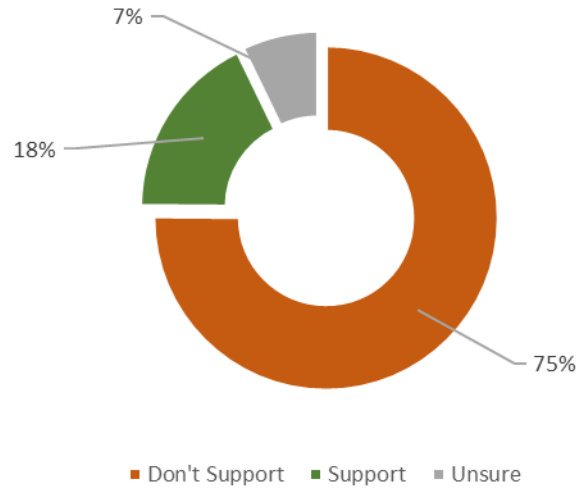


CMDE5

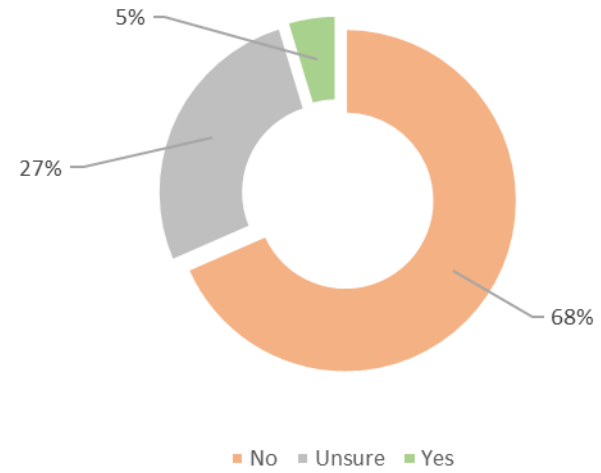
Blackbird Leys (*online responses only*):

CMDE5

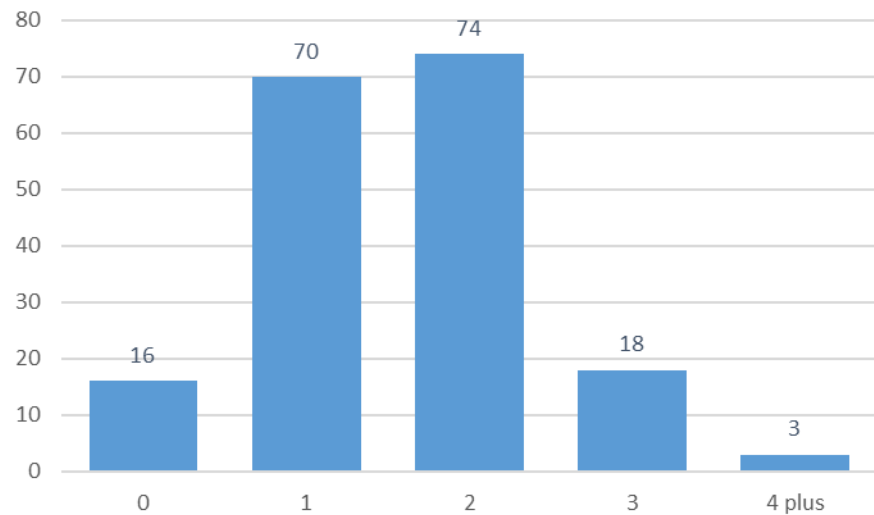
Do you support the introduction of a CPZ ?



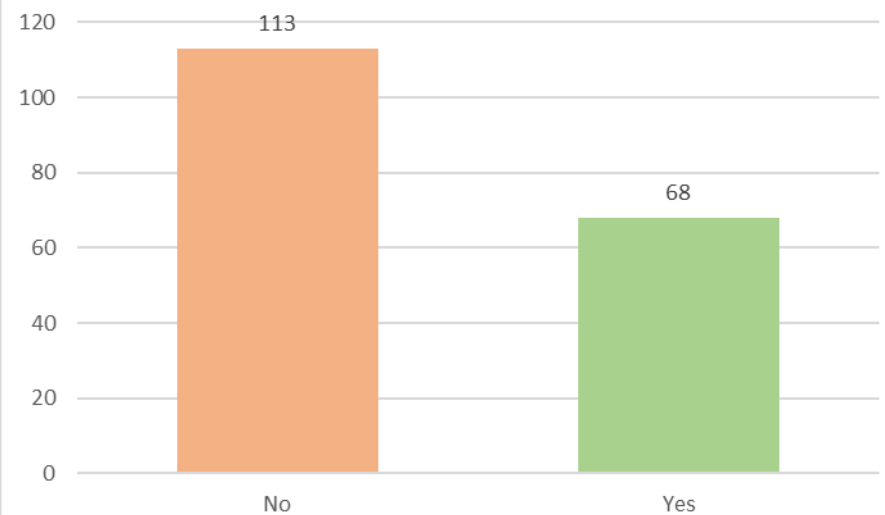
If not, do you think one may be necessary in future ?



How many cars / vans are currently owned ?

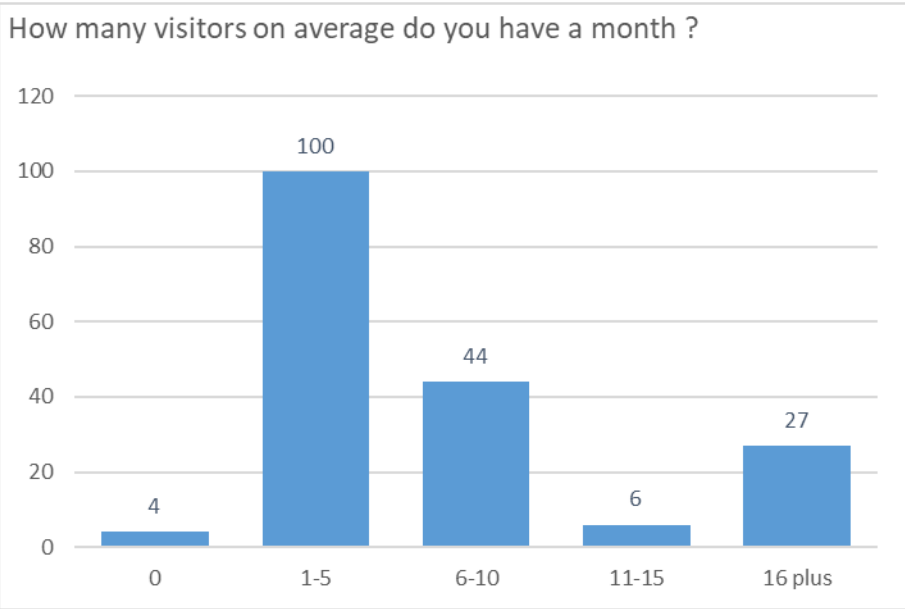
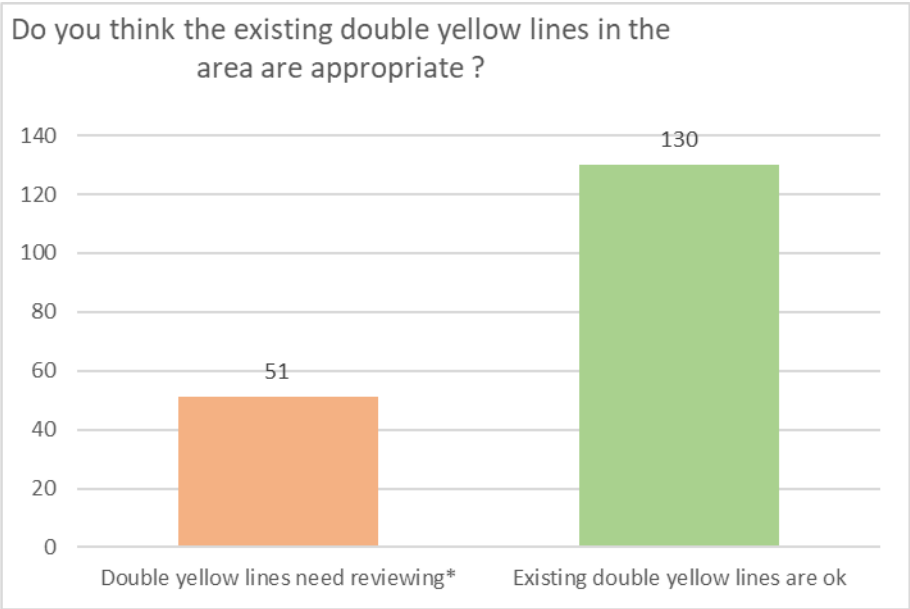
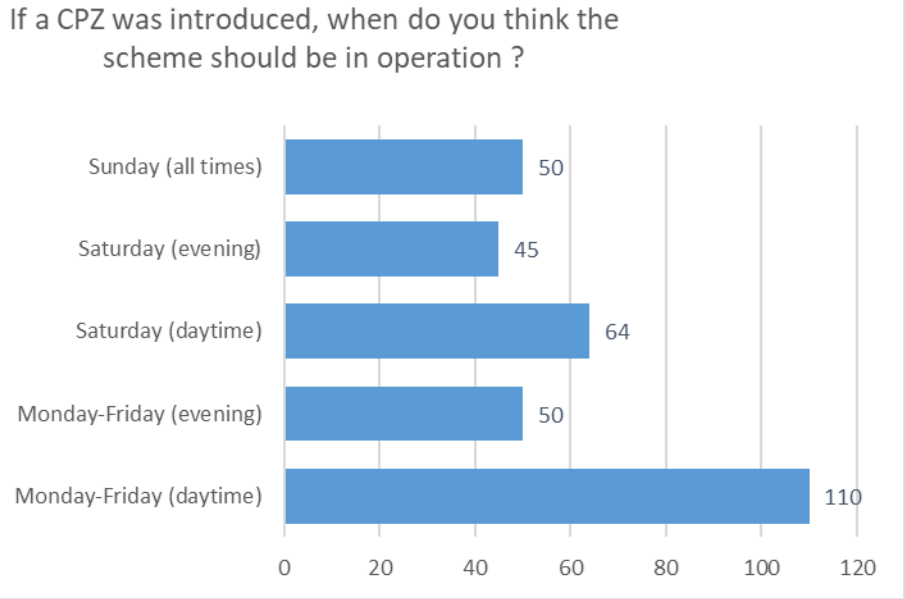


Do you have access to private/off-street parking ?



CMDE5

CMDE5

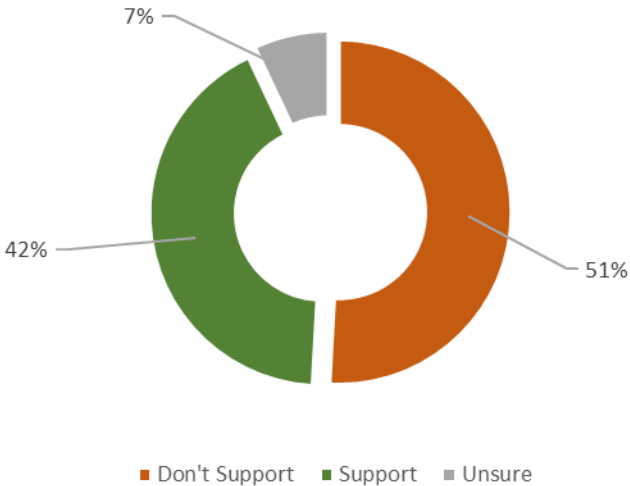


CMDE5

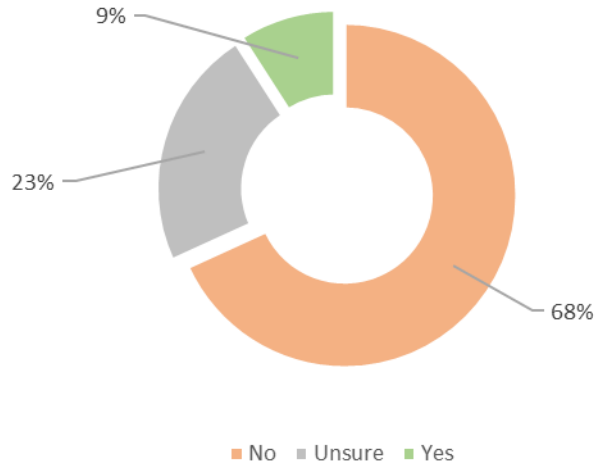
Donnington (*online responses only*):

CMDE5

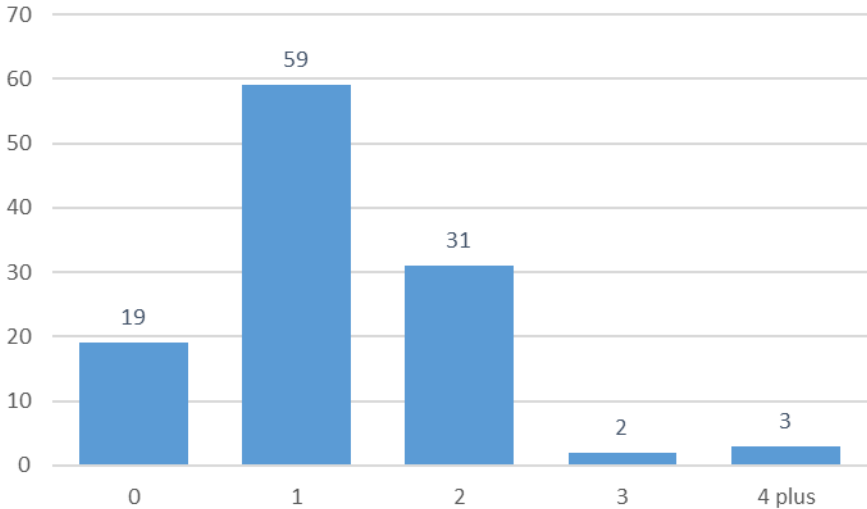
Do you support the introduction of a CPZ ?



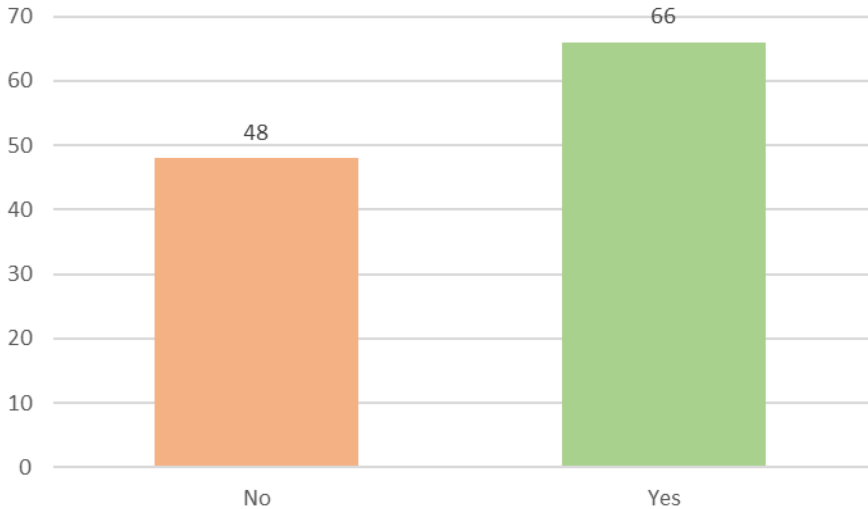
If not, do you think one may be necessary in future ?



How many cars / vans are currently owned ?

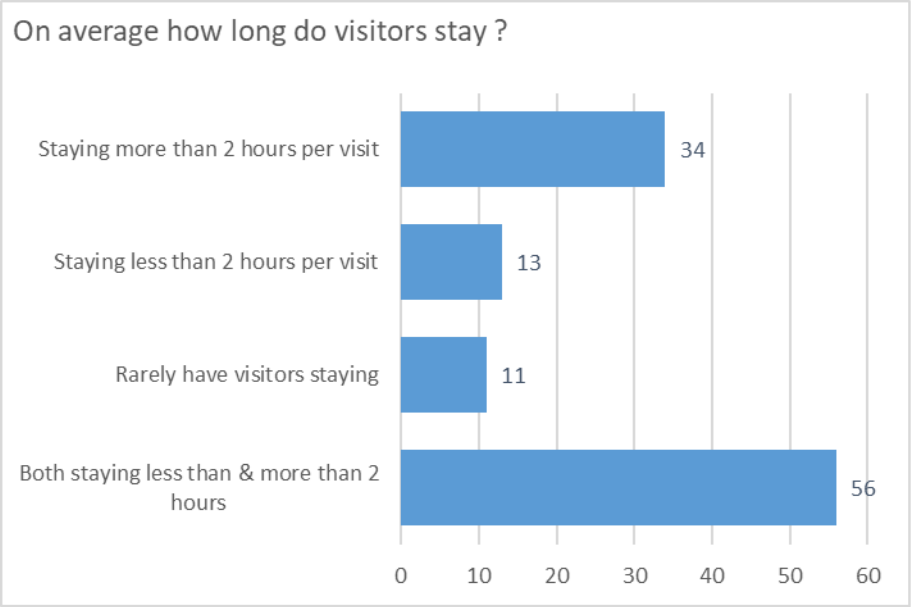
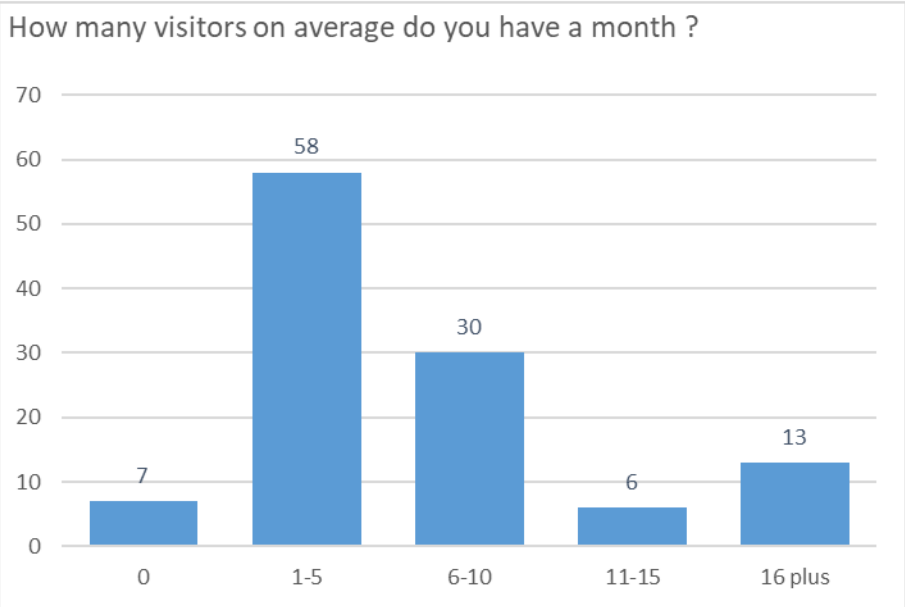
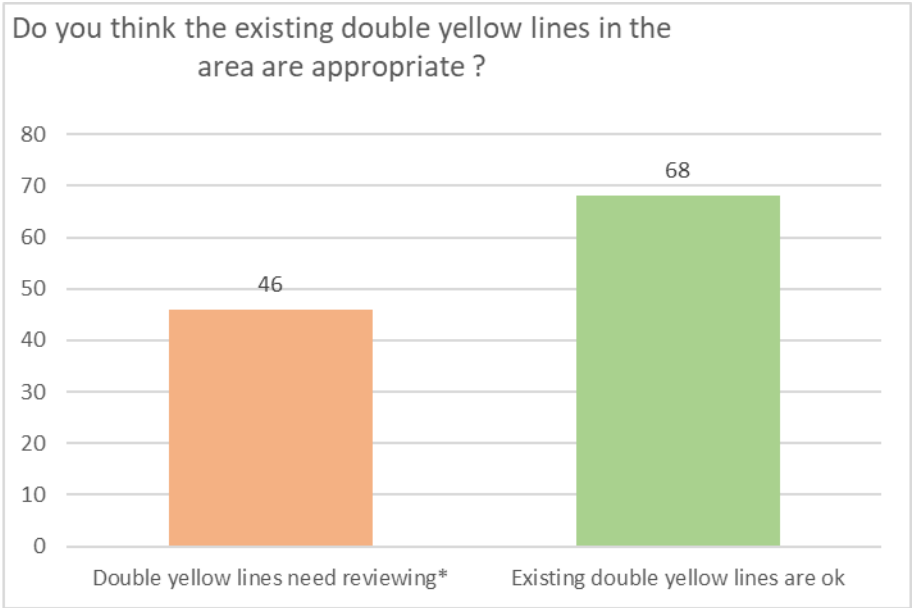
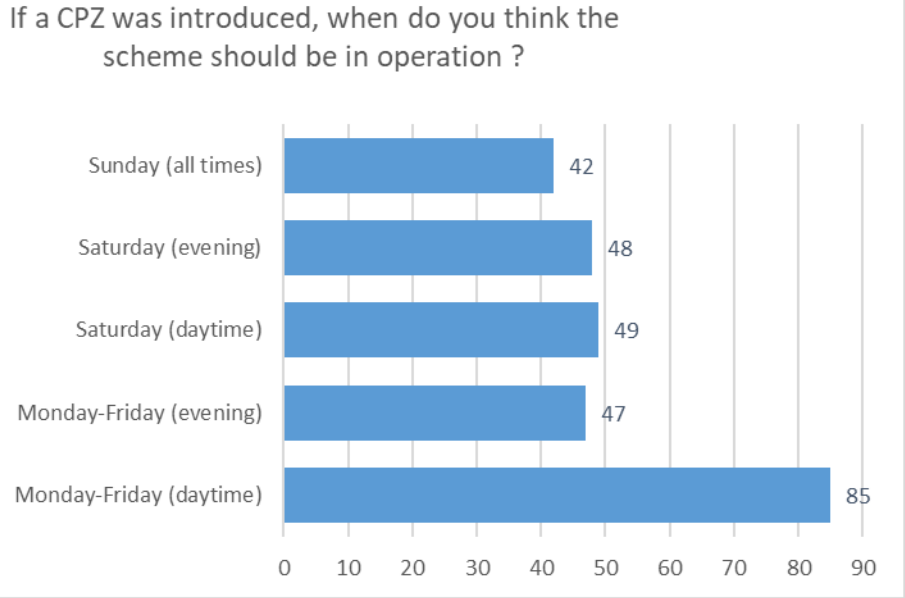


Do you have access to private/off-street parking ?



CMDE5

CMDE5



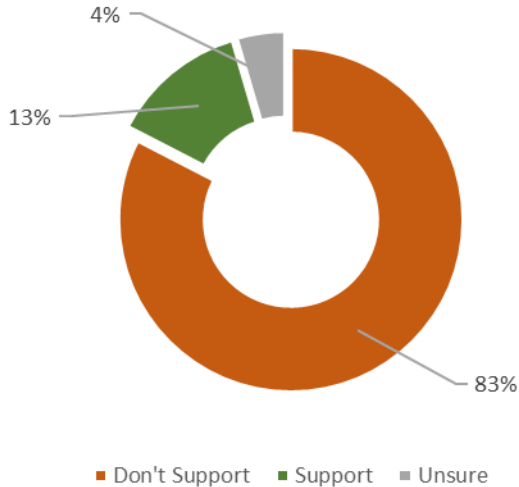
CMDE5

CMDE5

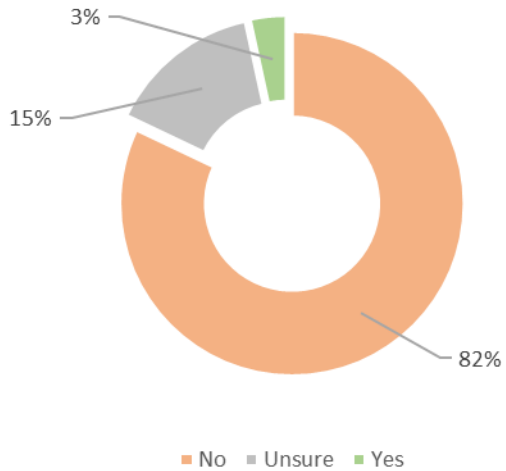
Greater Leys (*online responses only*):

CMDE5

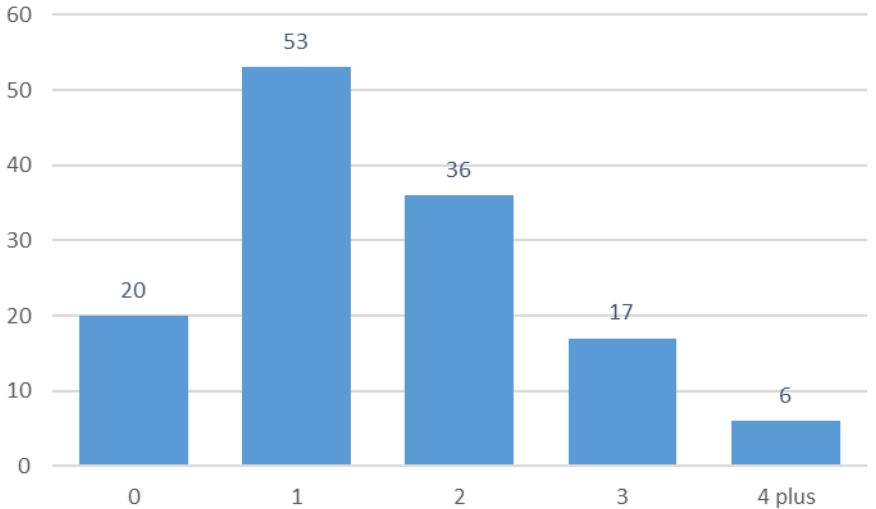
Do you support the introduction of a CPZ ?



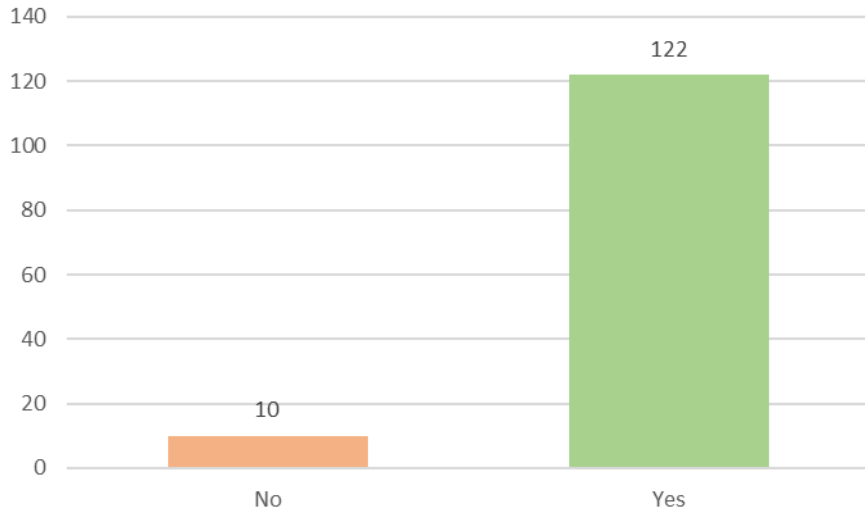
If not, do you think one may be necessary in future ?



How many cars / vans are currently owned ?

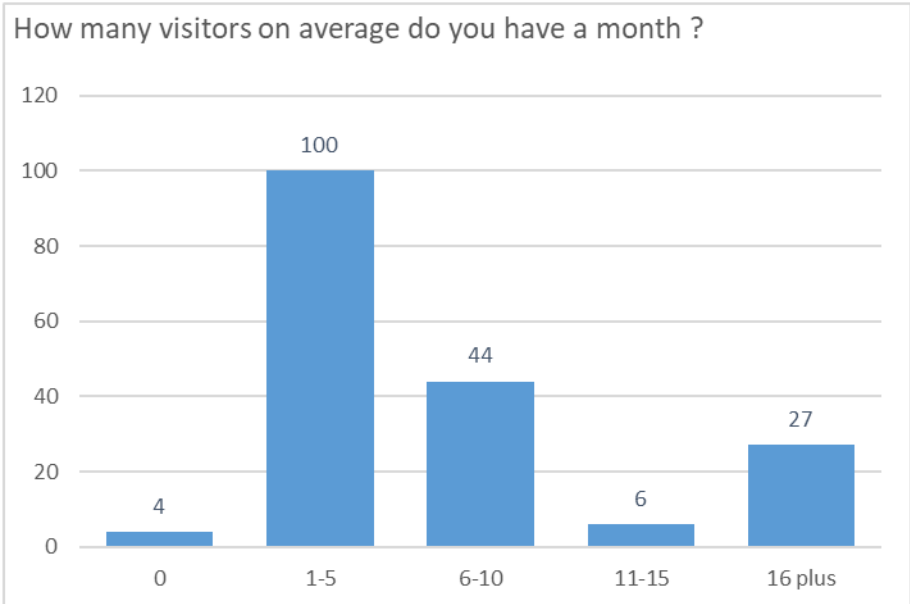
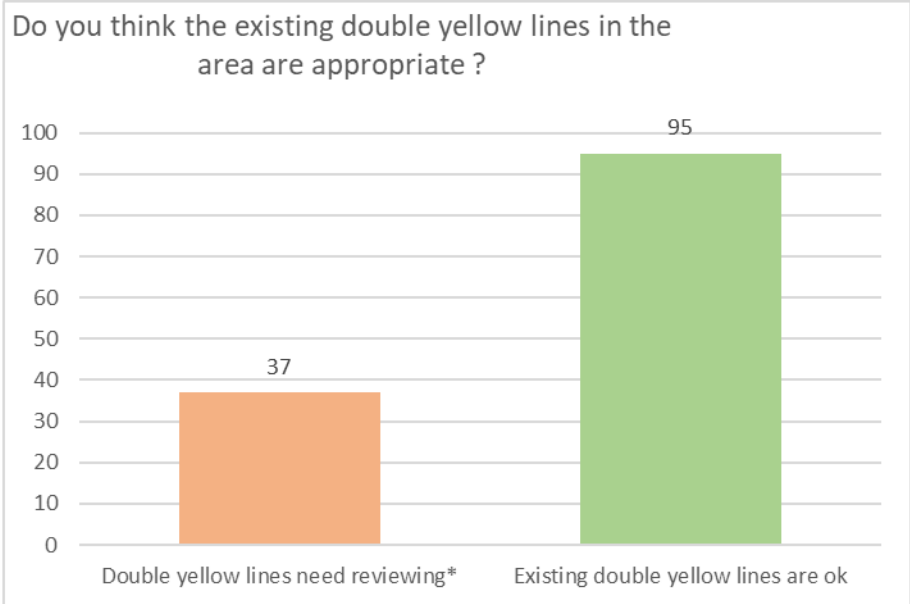
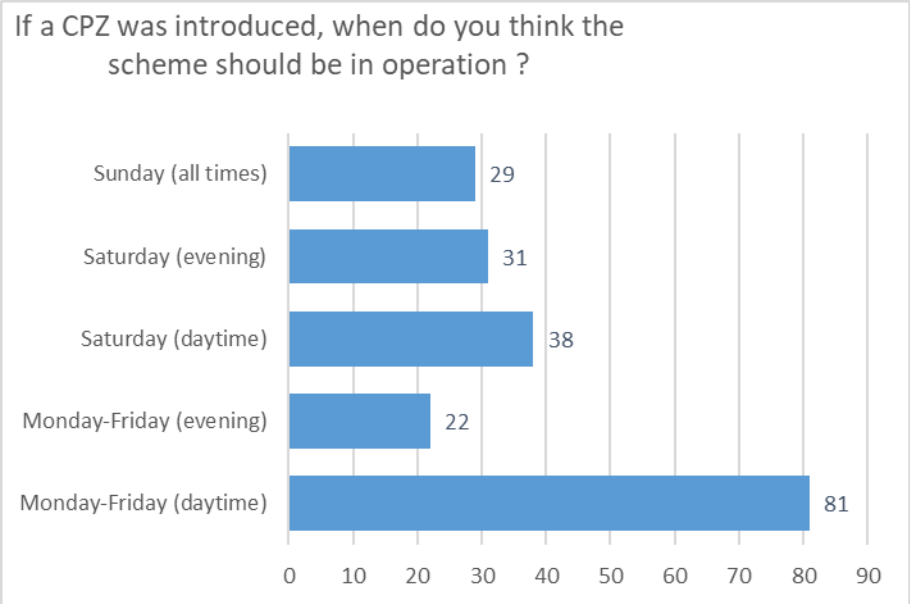


Do you have access to private/off-street parking ?



CMDE5

CMDE5

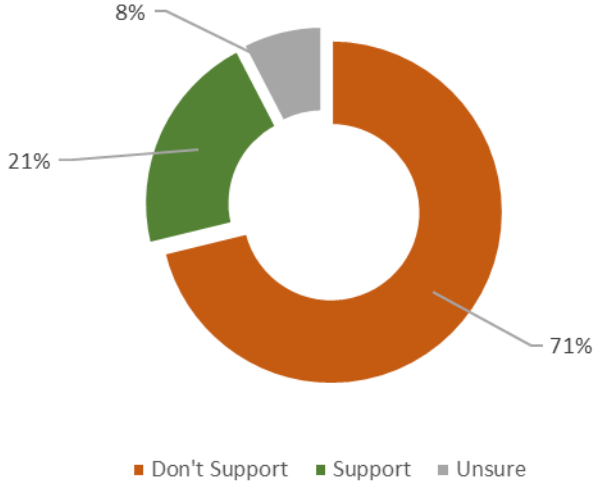


CMDE5

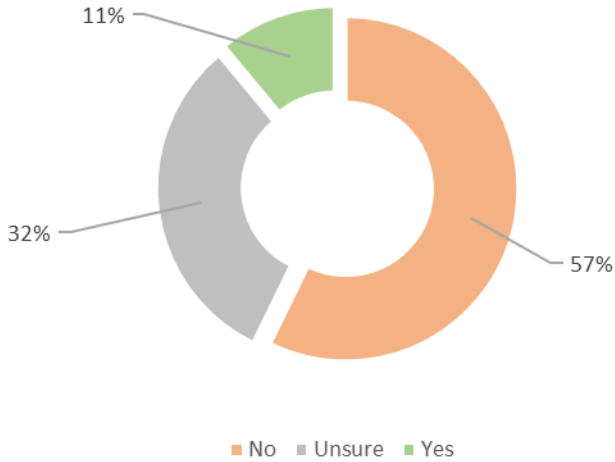
Iffley (*online responses only*):

CMDE5

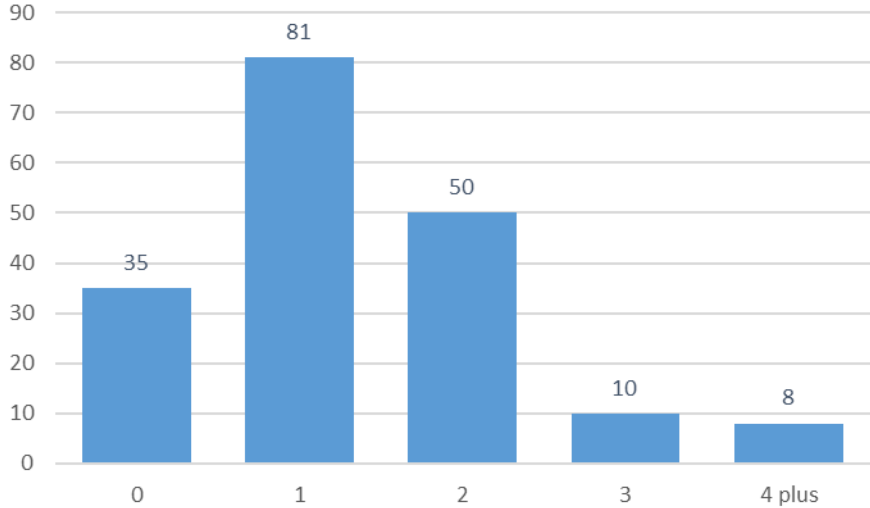
Do you support the introduction of a CPZ ?



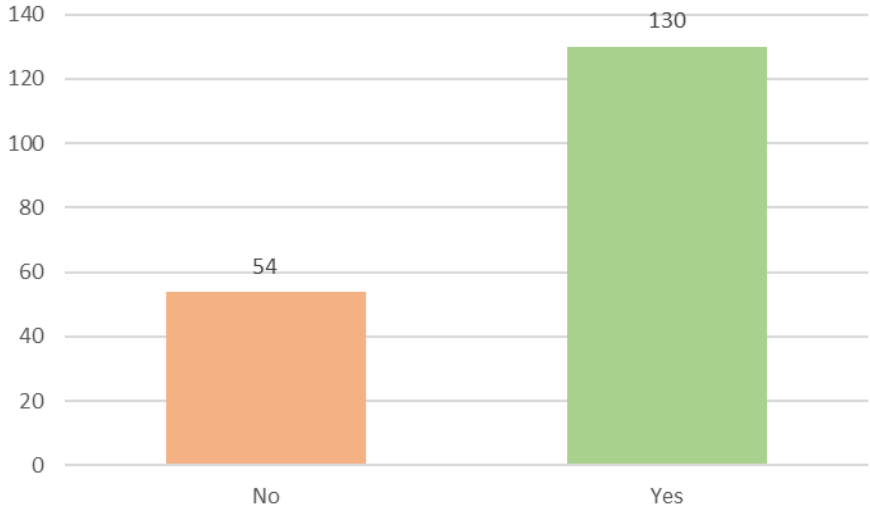
If not, do you think one may be necessary in future ?



How many cars / vans are currently owned ?

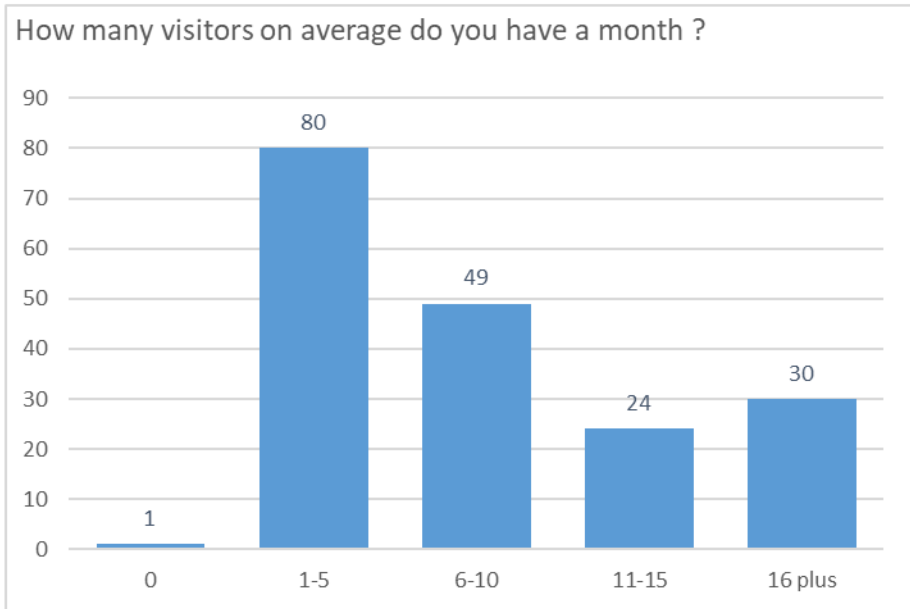
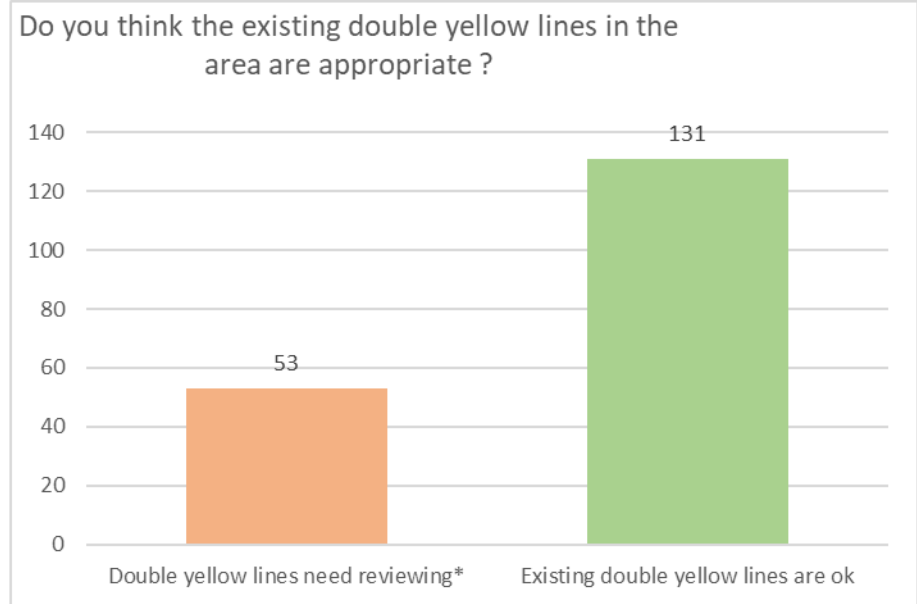
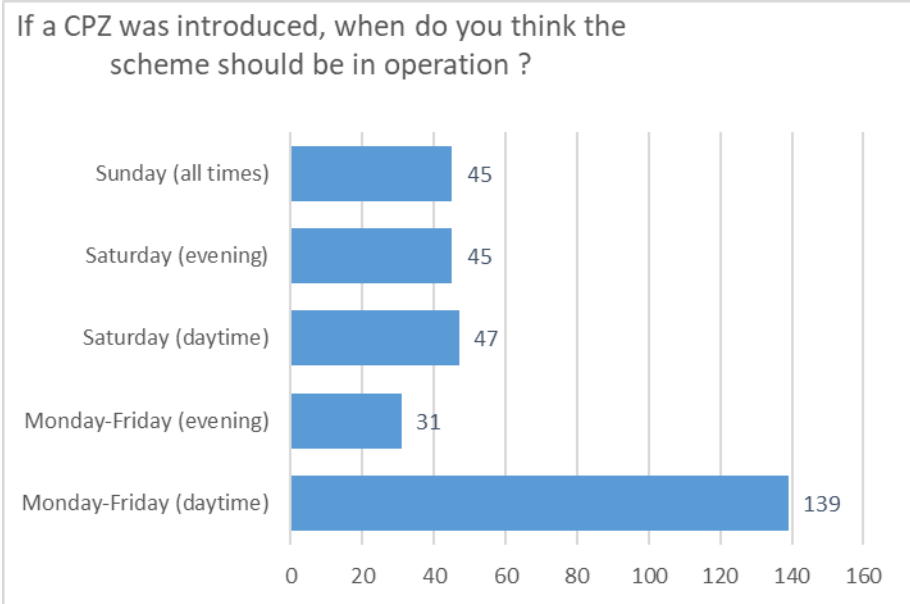


Do you have access to private/off-street parking ?



CMDE5

CMDE5

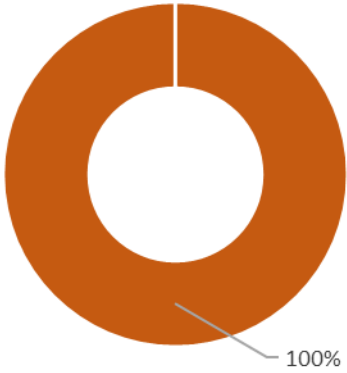


CMDE5

Jordan Hill (*online responses only*):

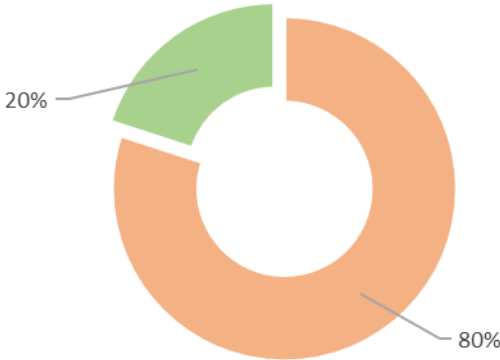
CMDE5

Do you support the introduction of a CPZ ?



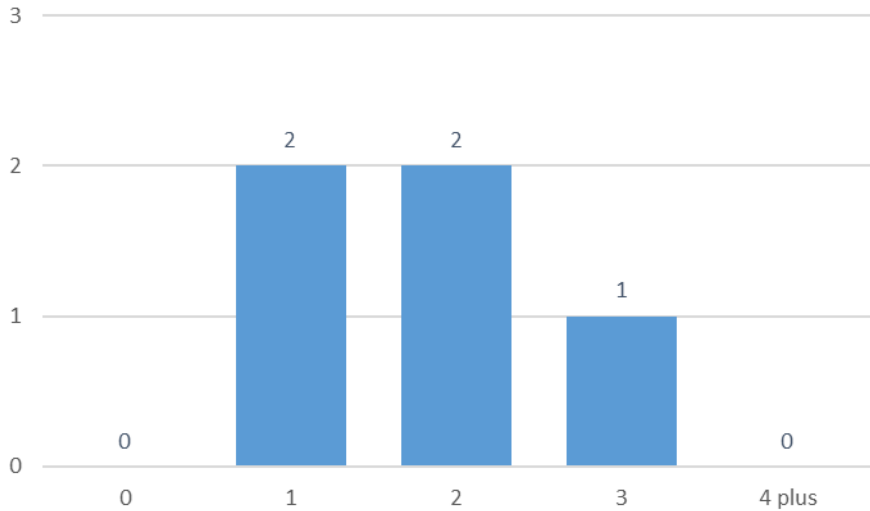
Don't Support

If not, do you think one may be necessary in future ?

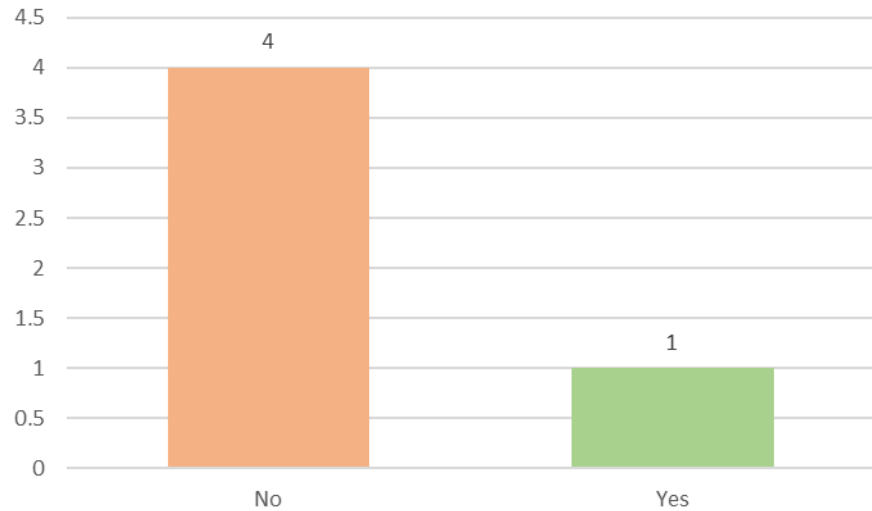


No Yes

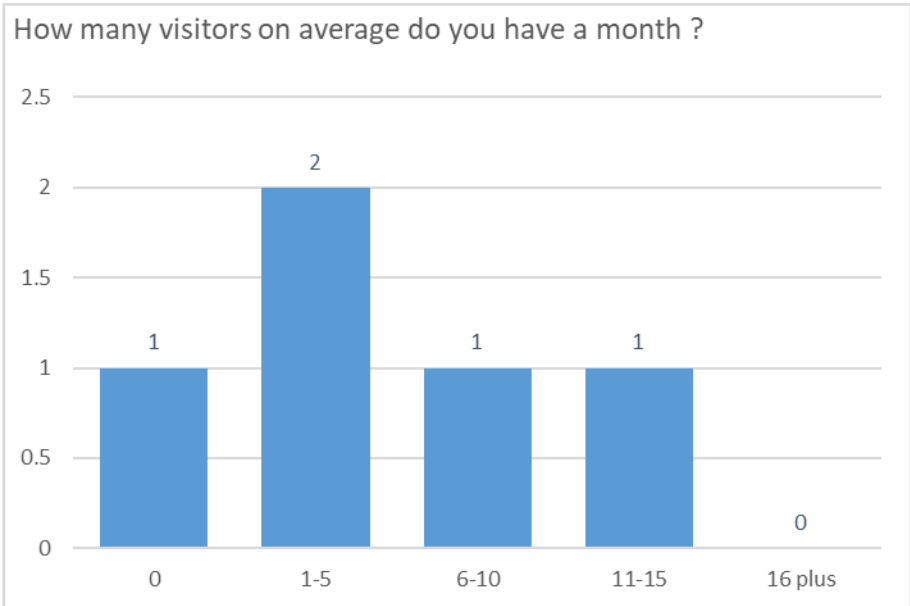
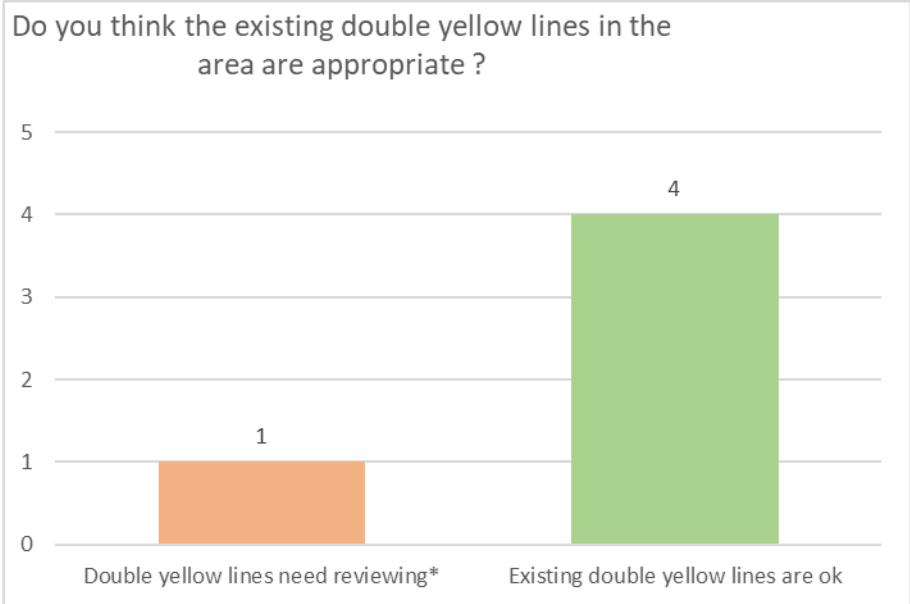
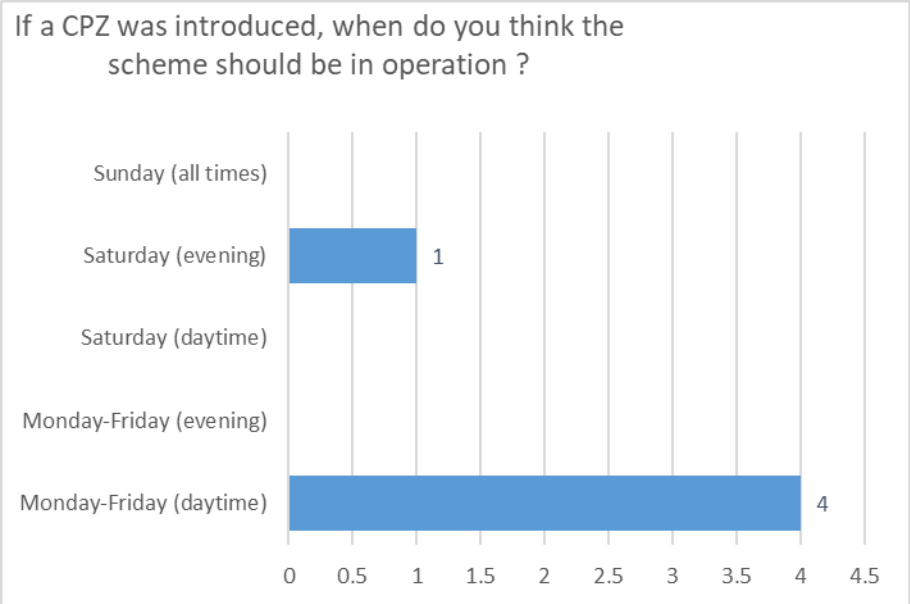
How many cars / vans are currently owned ?



Do you have access to private/off-street parking ?



CMDE5

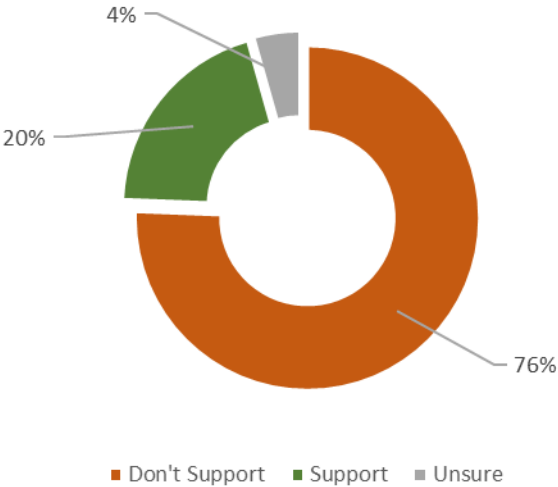


CMDE5

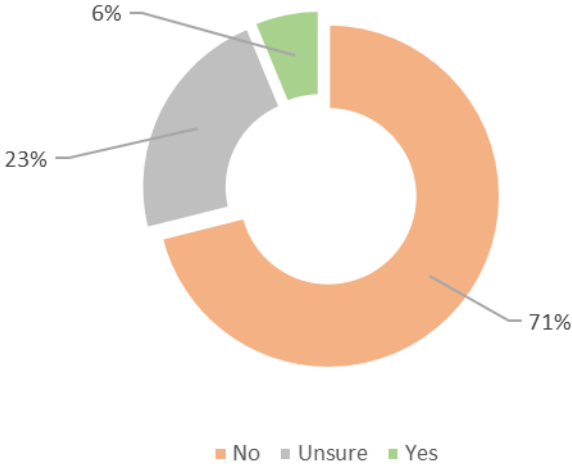
Littlemore North (*online responses only*):

CMDE5

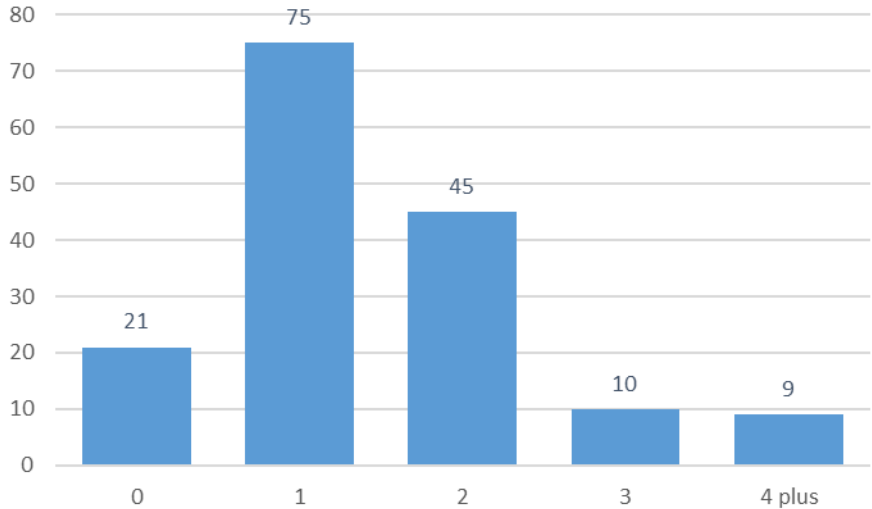
Do you support the introduction of a CPZ ?



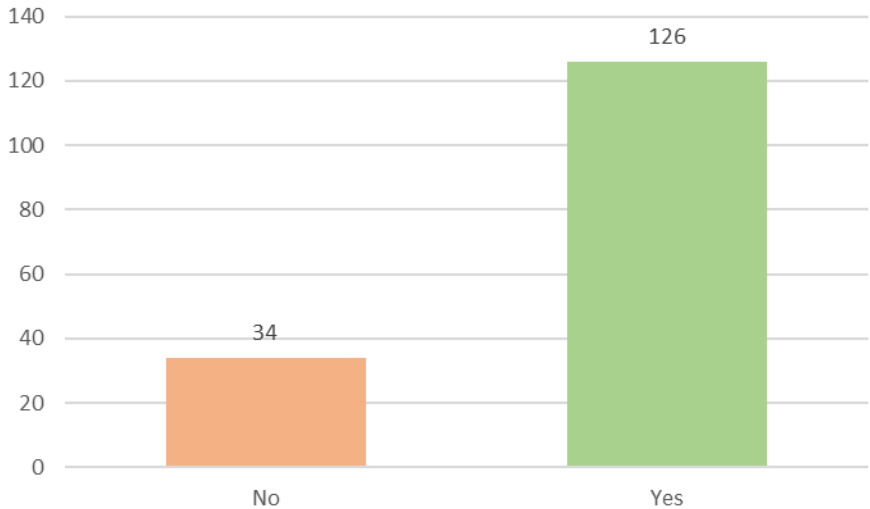
If not, do you think one may be necessary in future ?



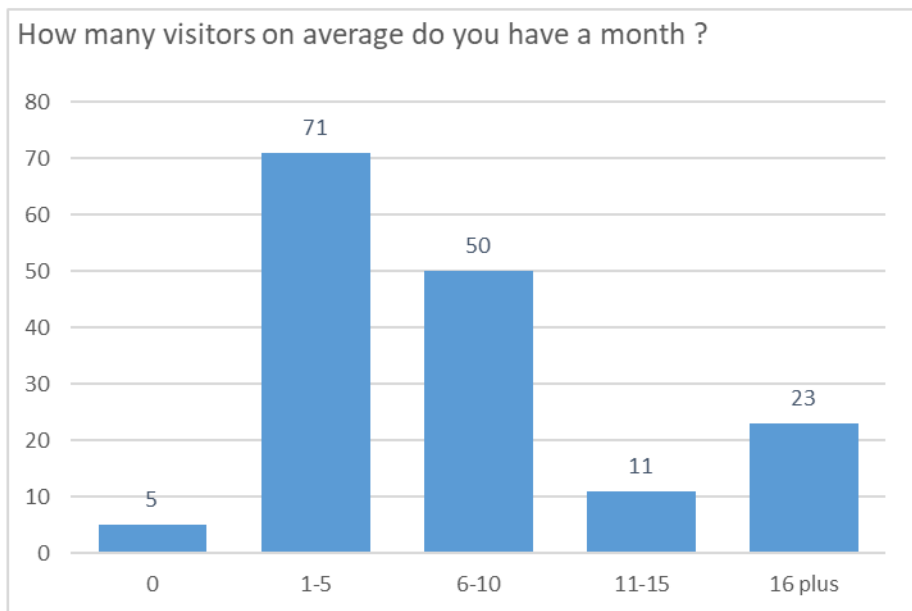
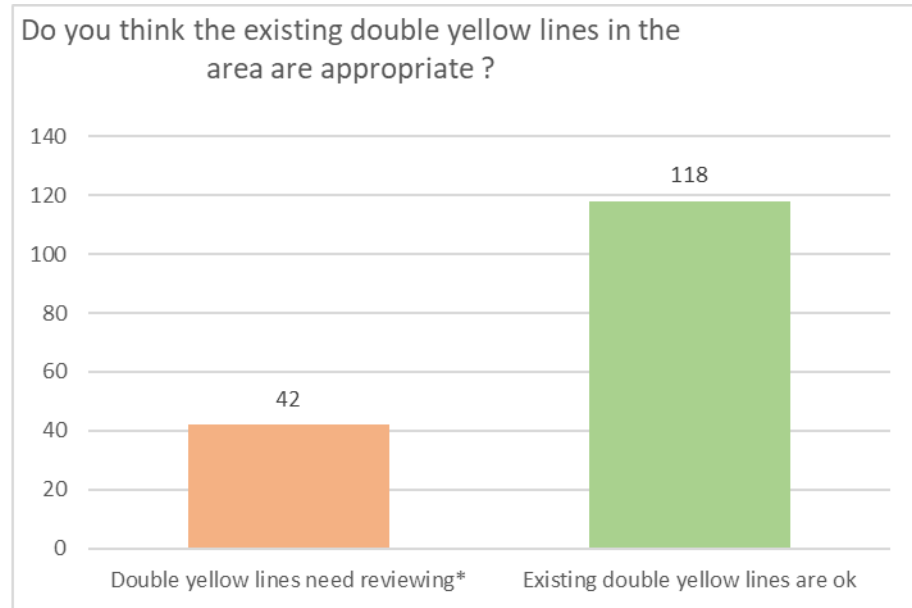
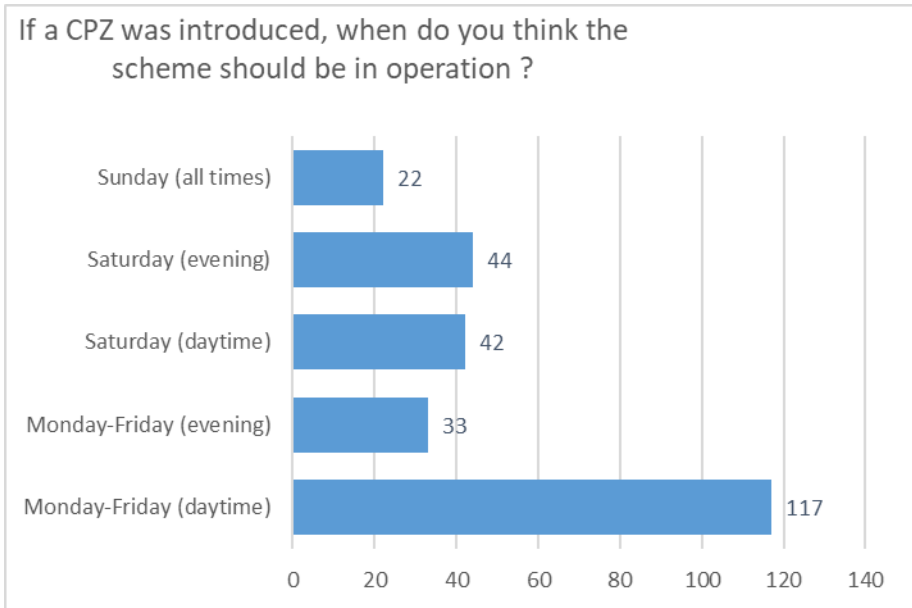
How many cars / vans are currently owned ?



Do you have access to private/off-street parking ?



CMDE5

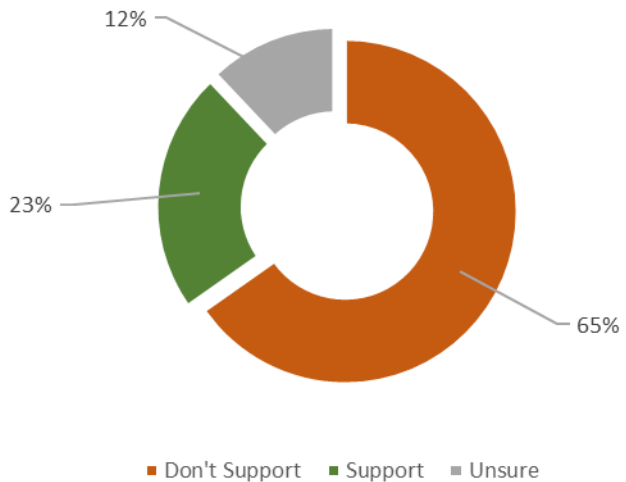


CMDE5

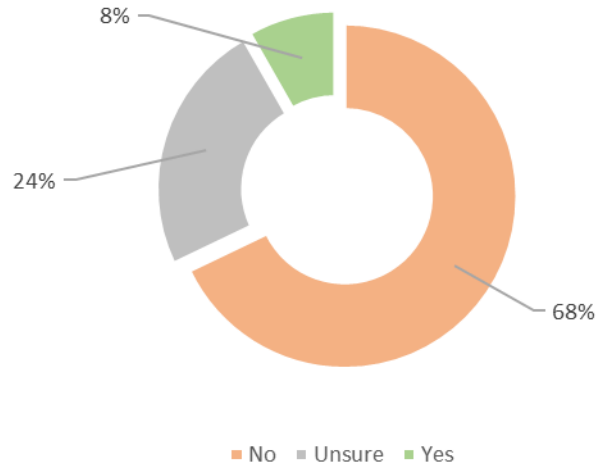
Littlemore South (*online responses only*):

CMDE5

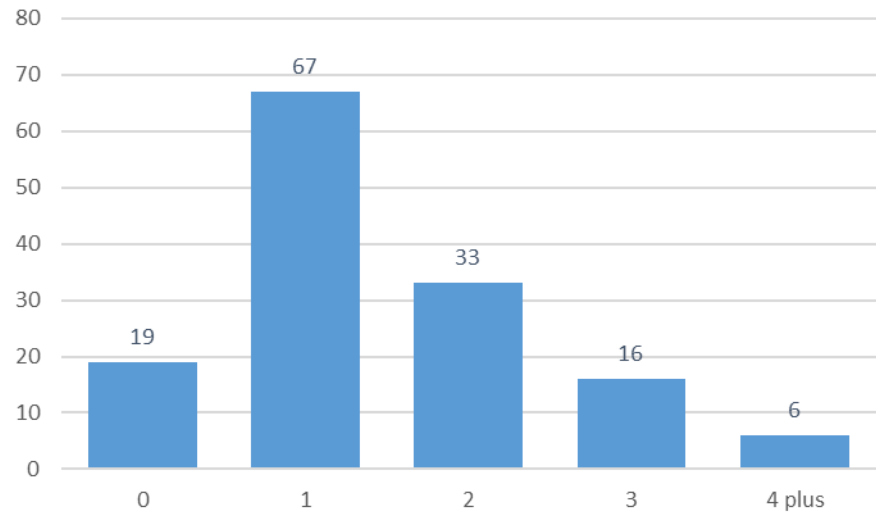
Do you support the introduction of a CPZ ?



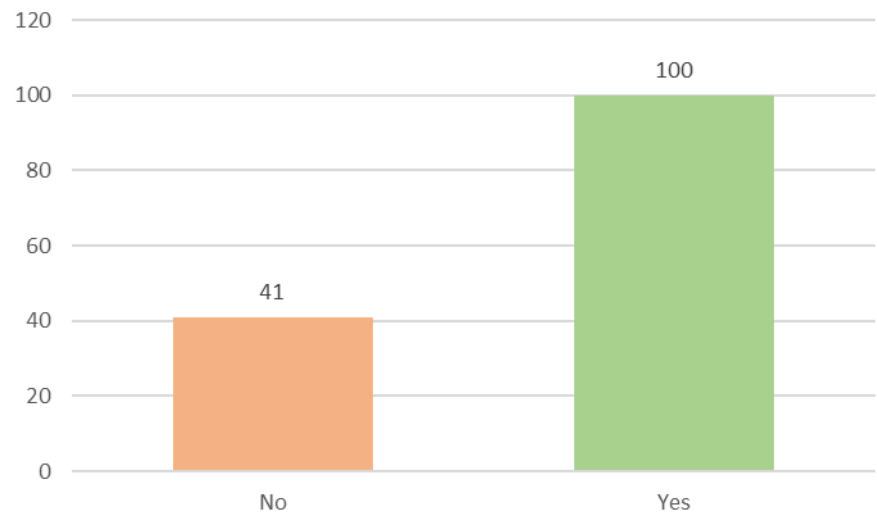
If not, do you think one may be necessary in future ?



How many cars / vans are currently owned ?

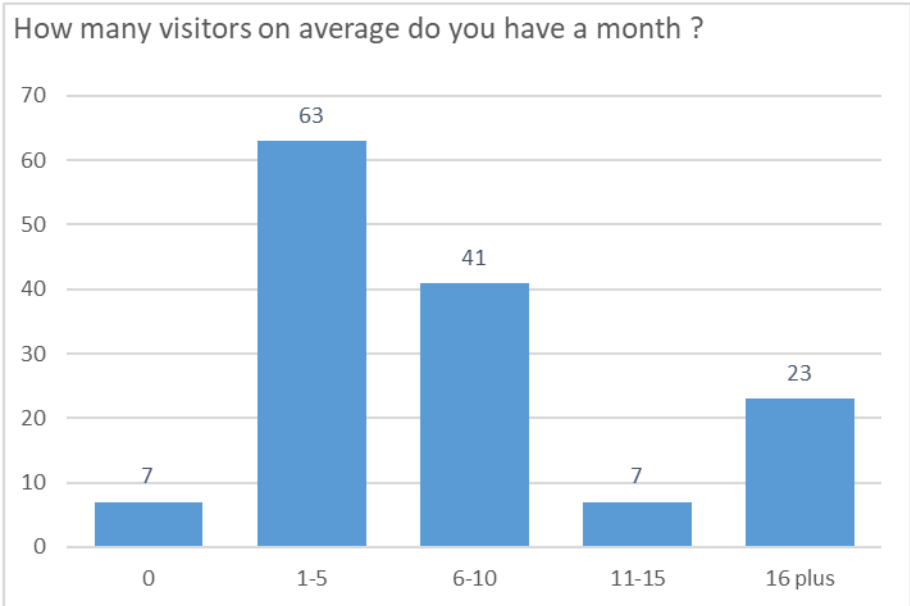
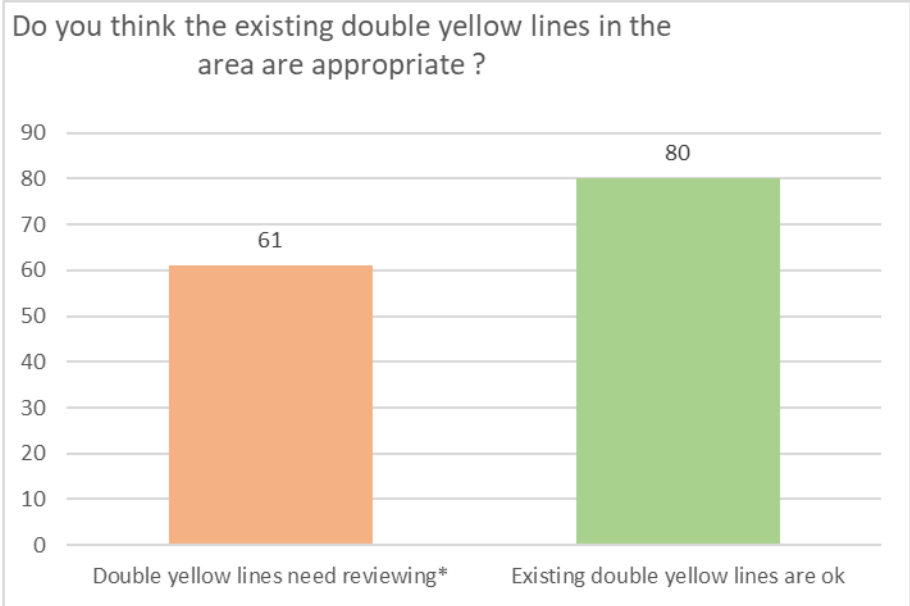
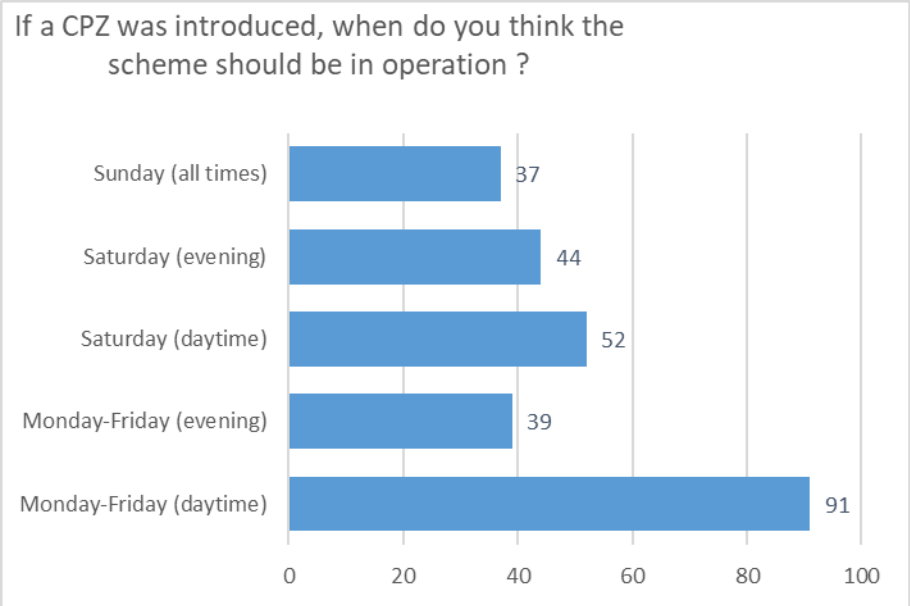


Do you have access to private/off-street parking ?



CMDE5

CMDE5

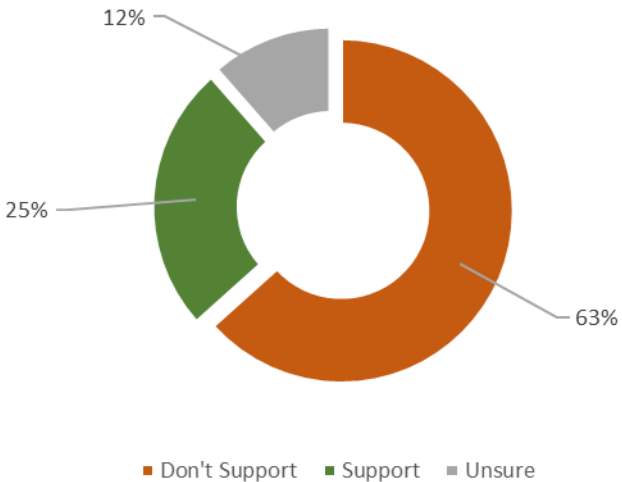


CMDE5

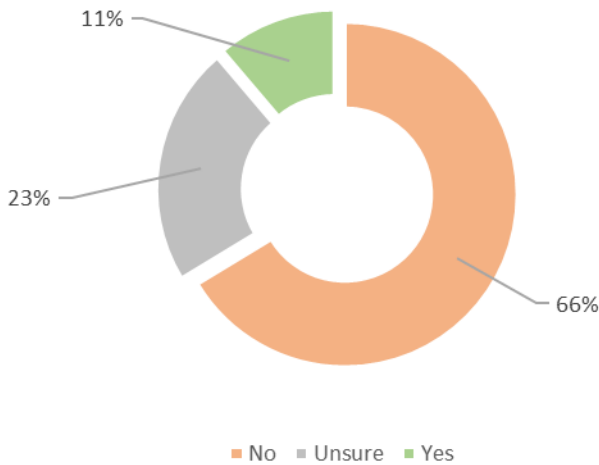
Lower Wolvercote (*online responses only*):

CMDE5

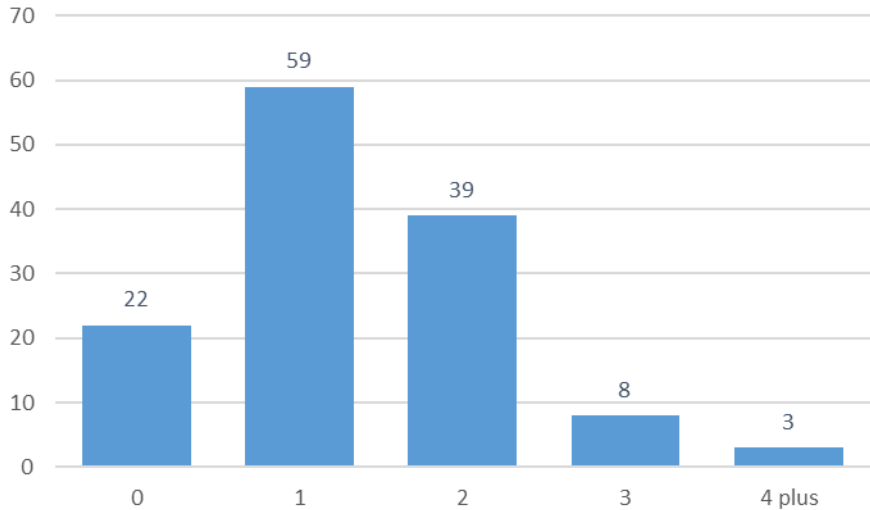
Do you support the introduction of a CPZ ?



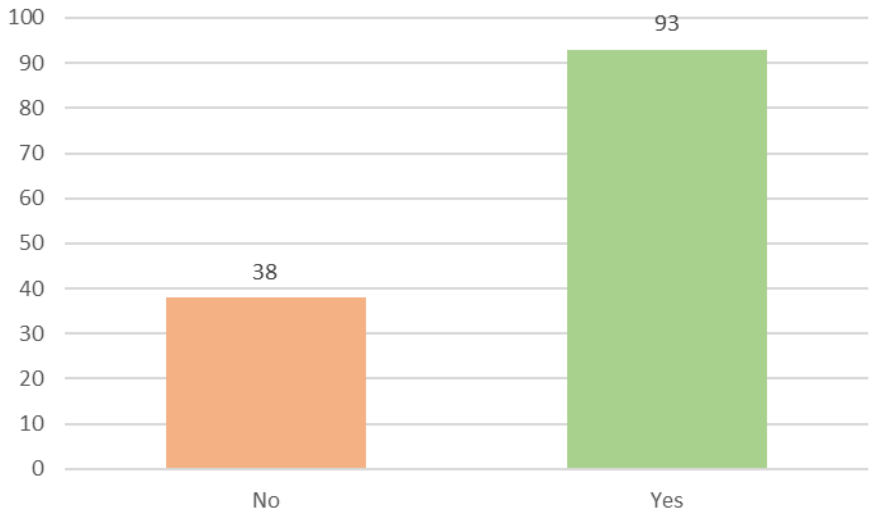
If not, do you think one may be necessary in future ?



How many cars / vans are currently owned ?

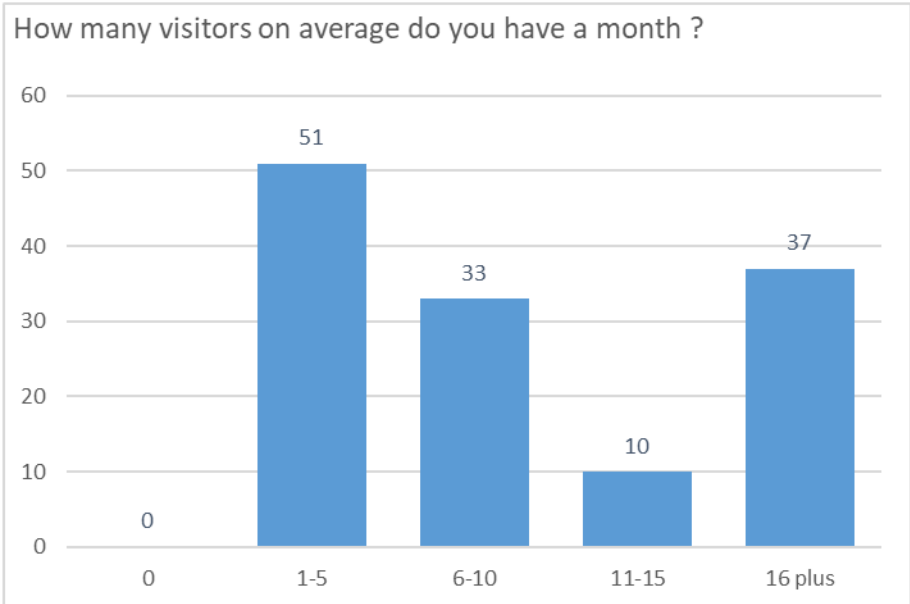
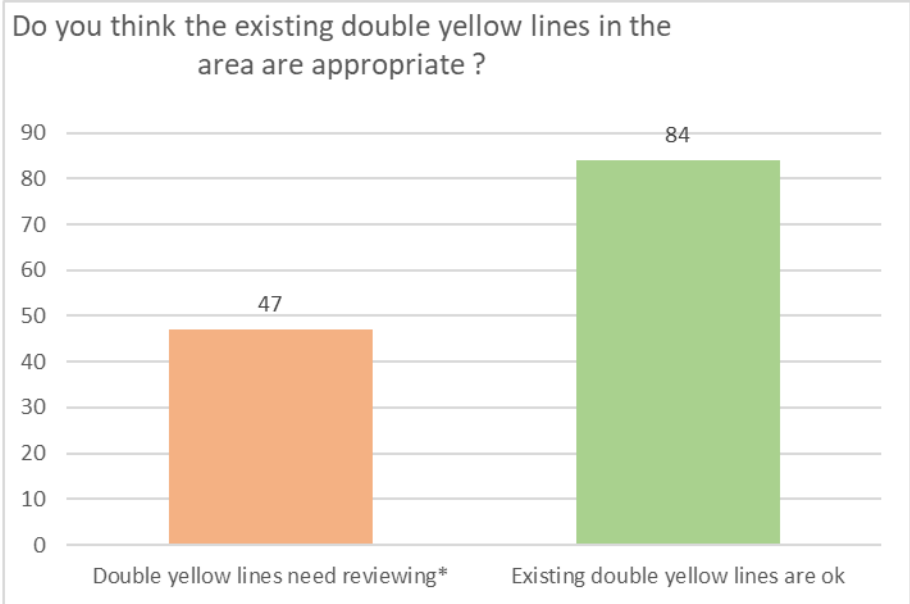
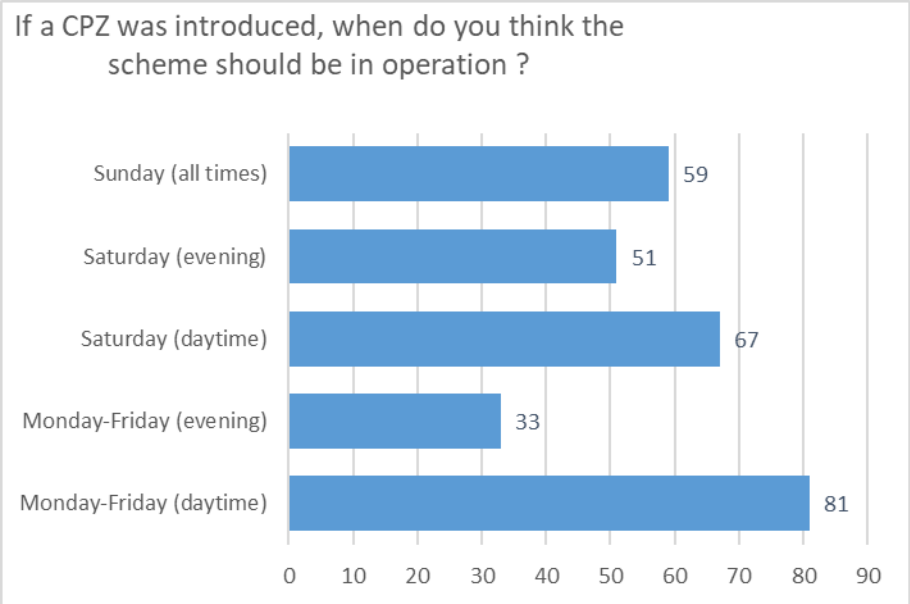


Do you have access to private/off-street parking ?



CMDE5

CMDE5

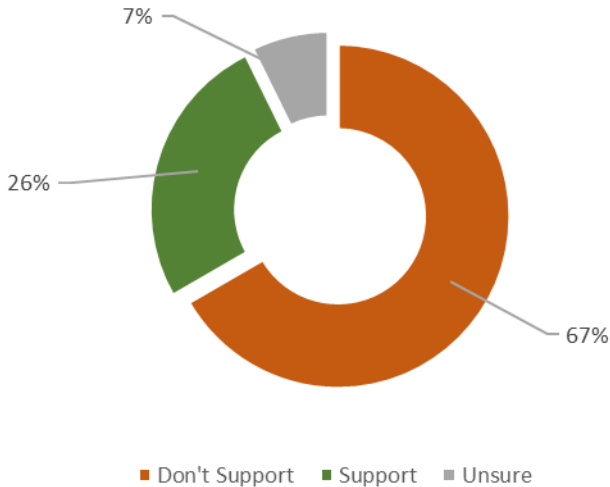


CMDE5

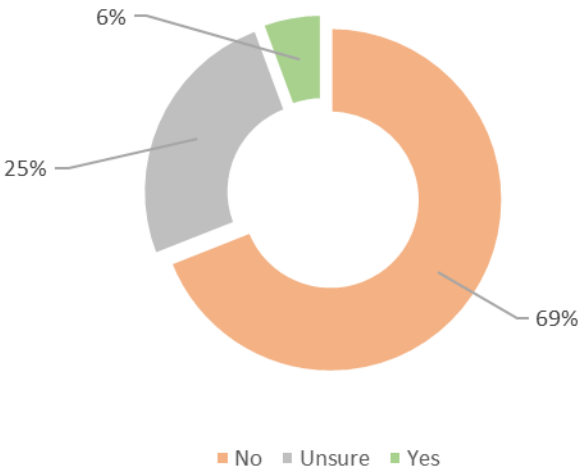
Risinghurst (*online responses only*):

CMDE5

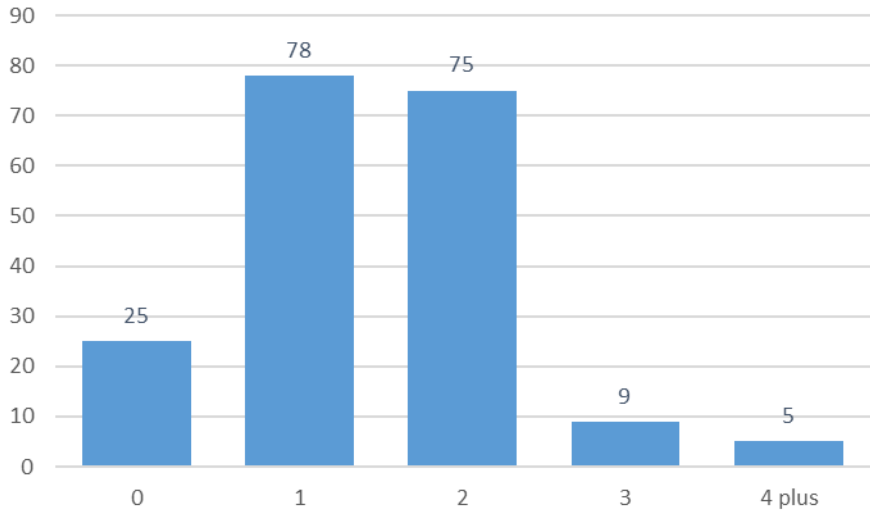
Do you support the introduction of a CPZ ?



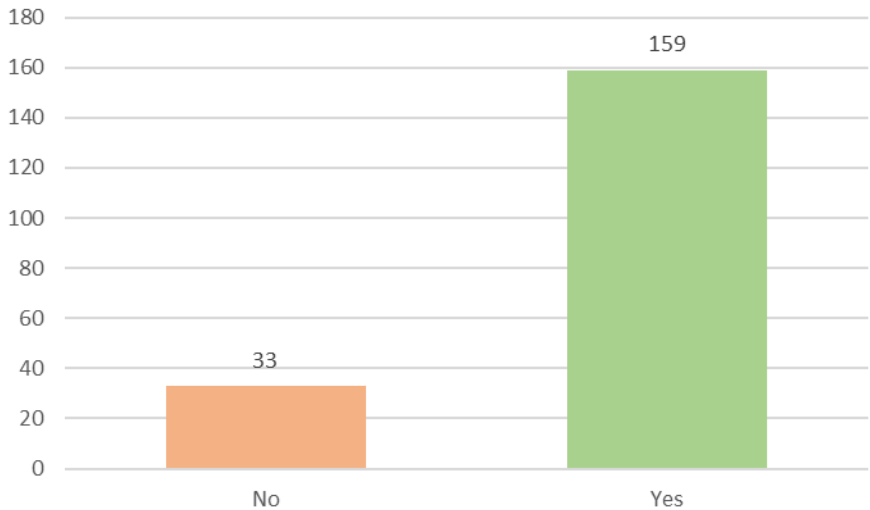
If not, do you think one may be necessary in future ?



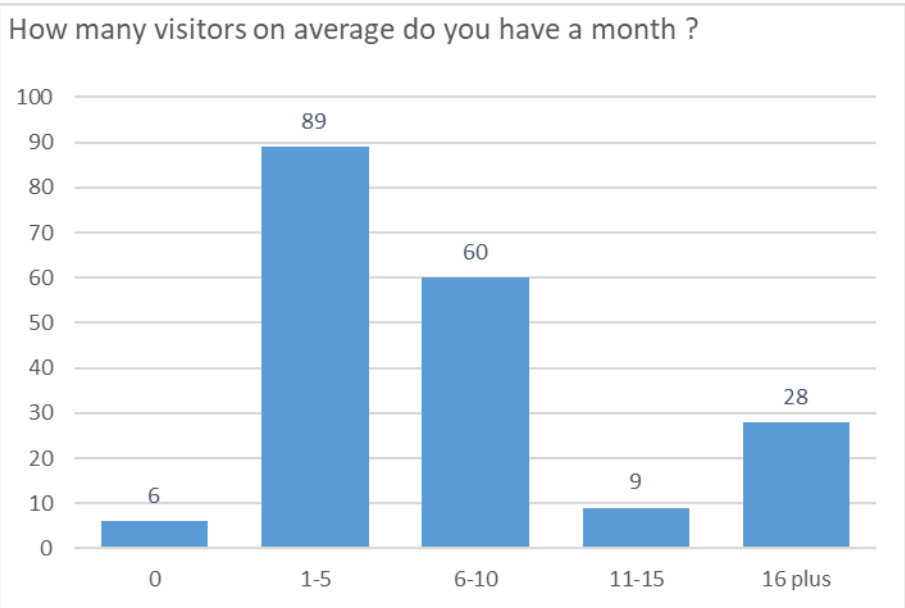
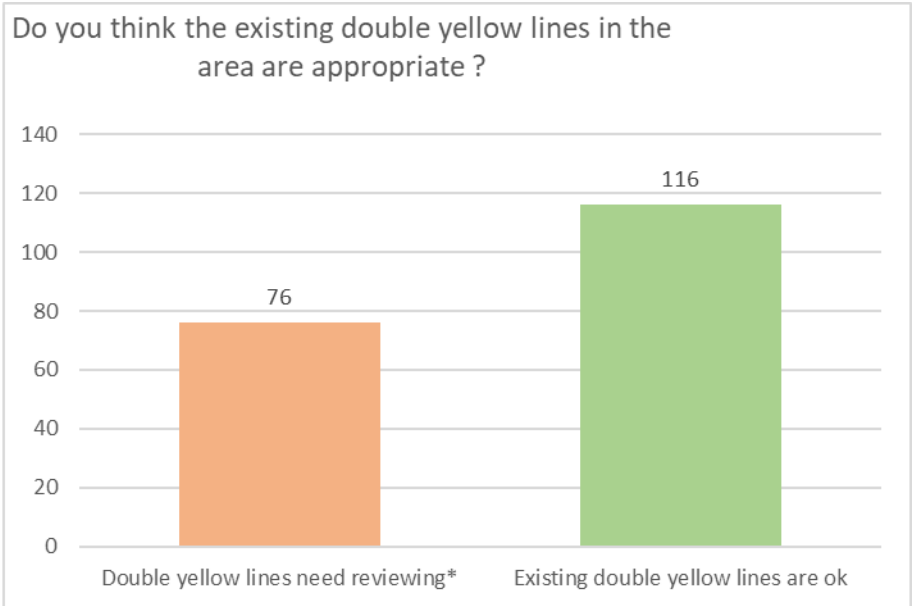
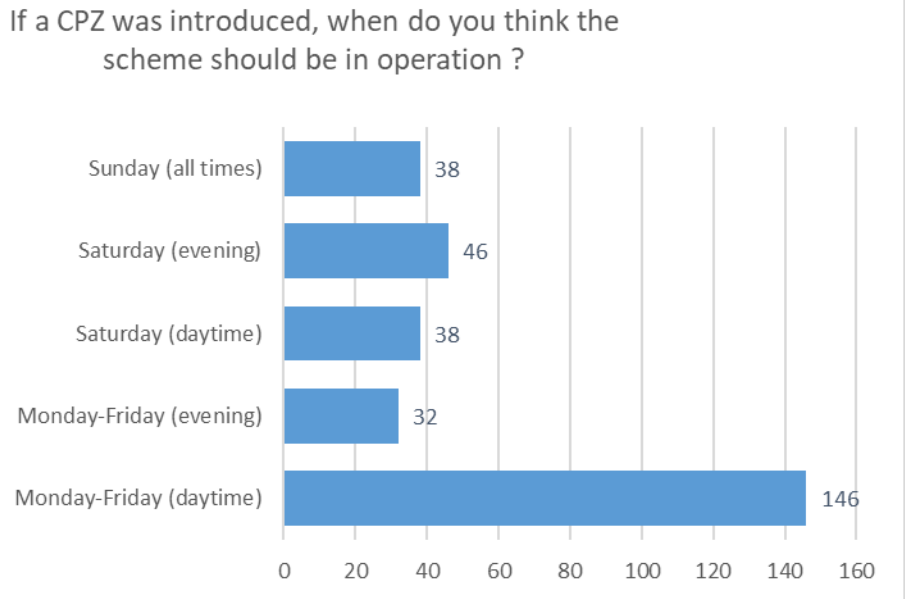
How many cars / vans are currently owned ?



Do you have access to private/off-street parking ?



CMDE5

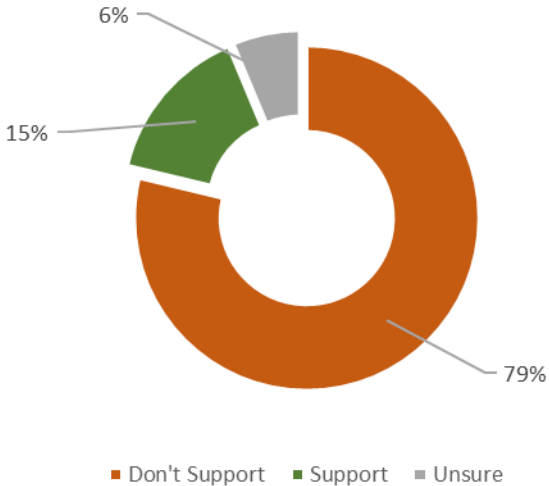


CMDE5

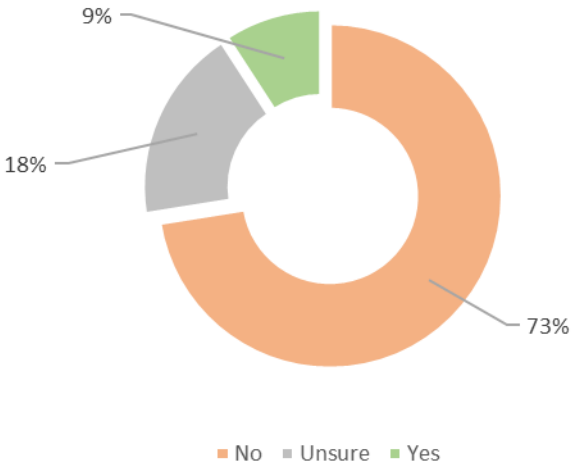
Rose Hill (*online responses only*):

CMDE5

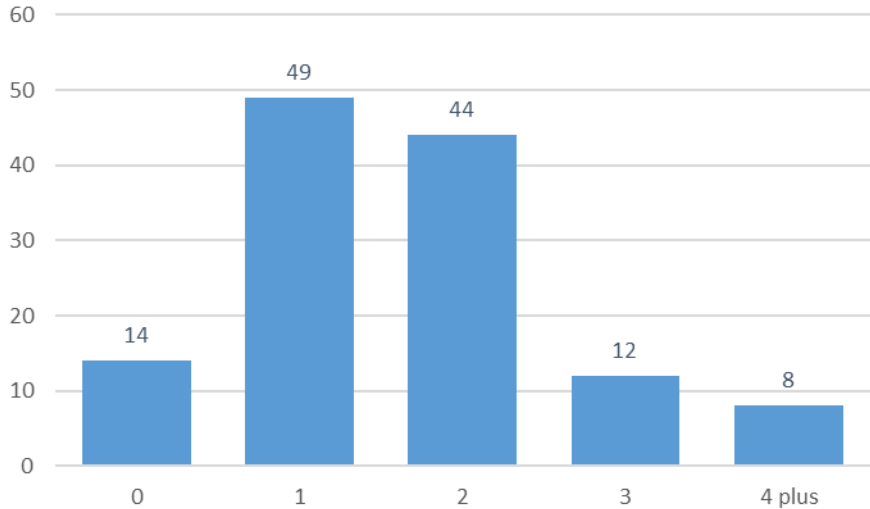
Do you support the introduction of a CPZ ?



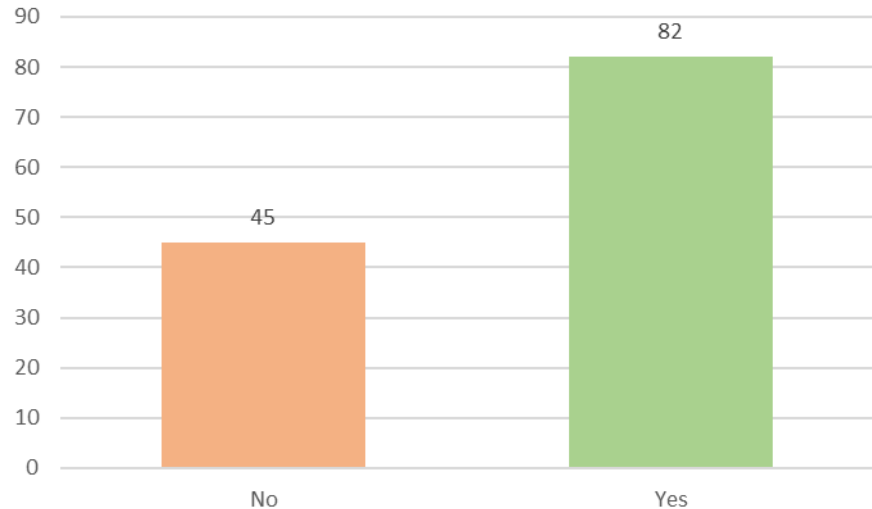
If not, do you think one may be necessary in future ?



How many cars / vans are currently owned ?

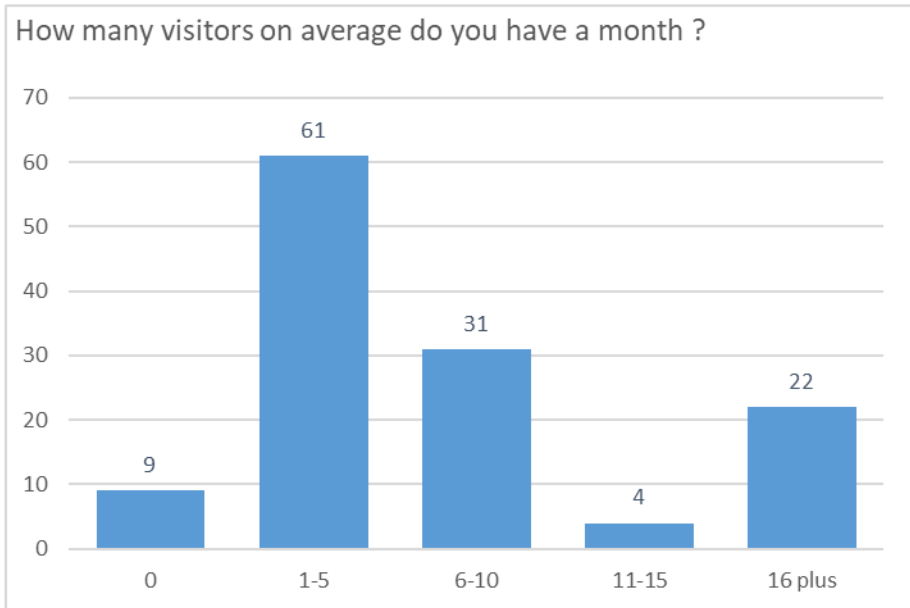
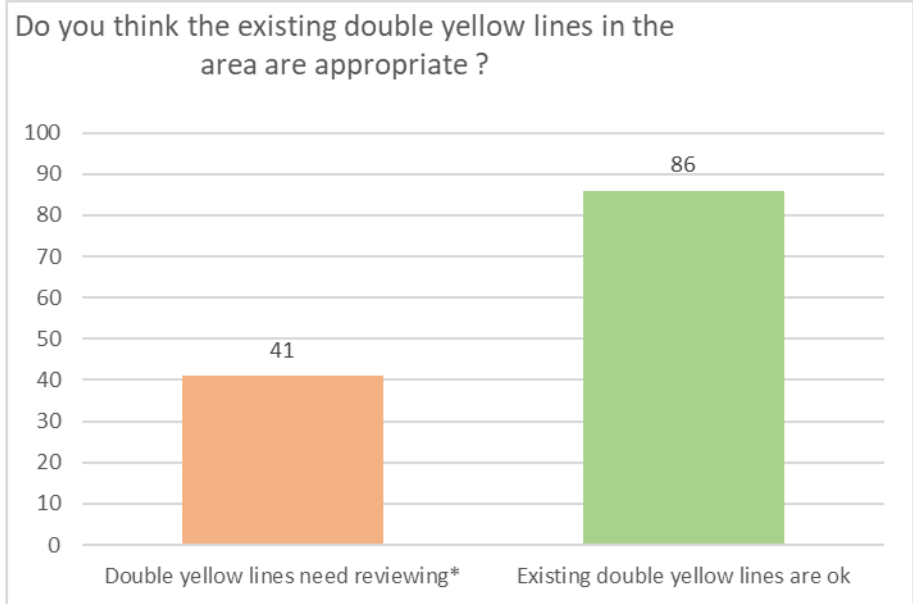
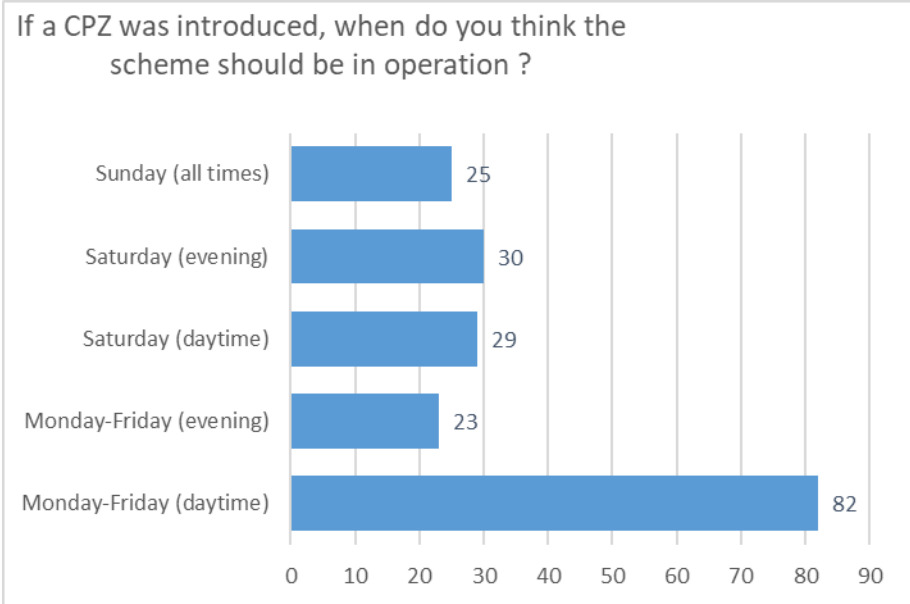


Do you have access to private/off-street parking ?



CMDE5

CMDE5

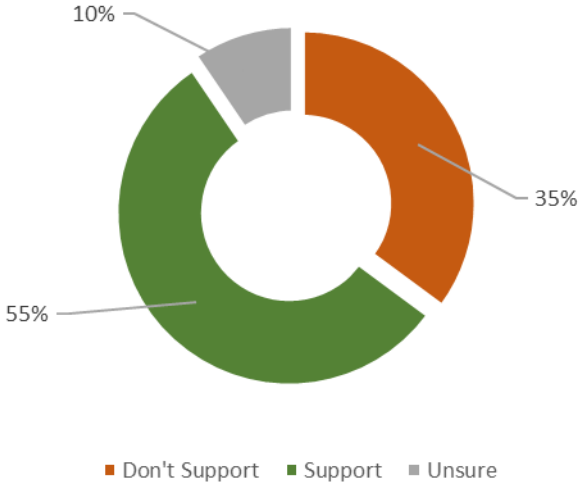


CMDE5

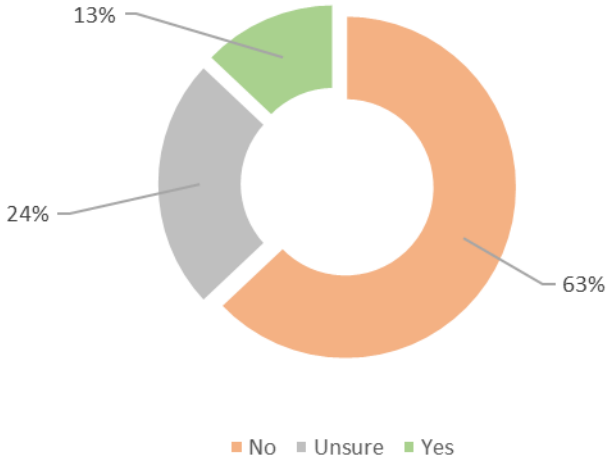
South Oxford (extension) (*online responses only*):

CMDE5

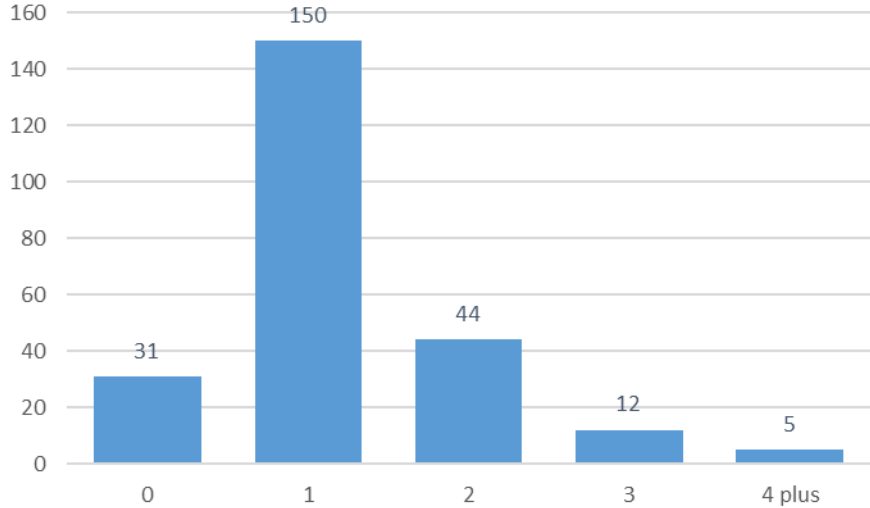
Do you support the introduction of a CPZ ?



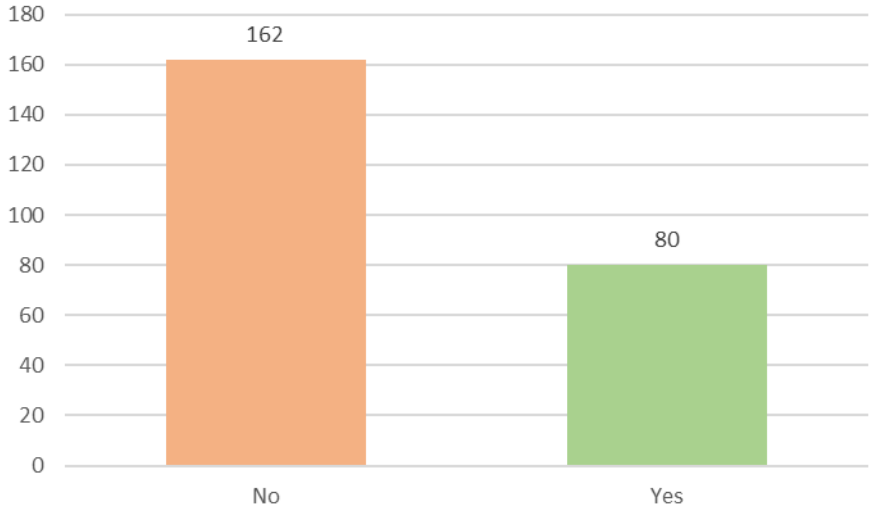
If not, do you think one may be necessary in future ?



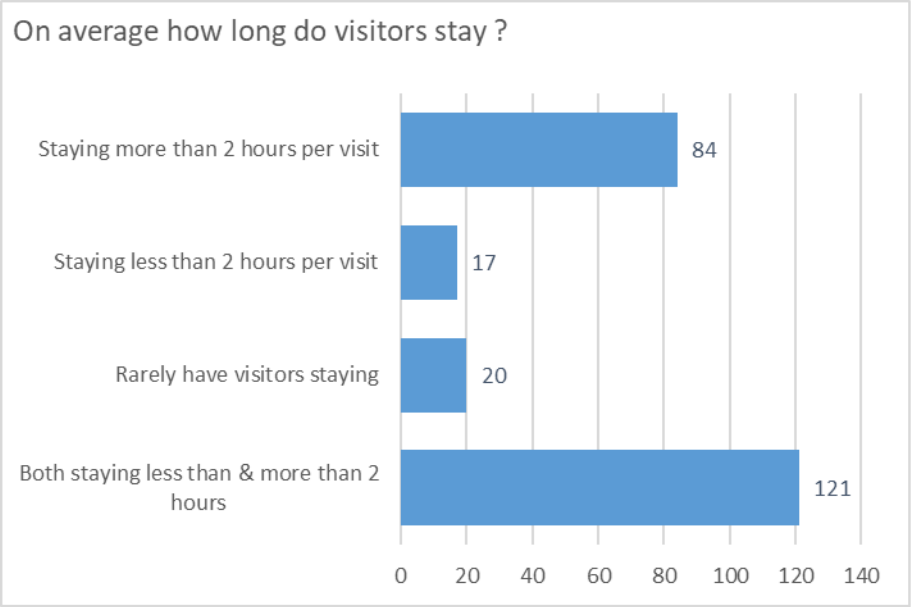
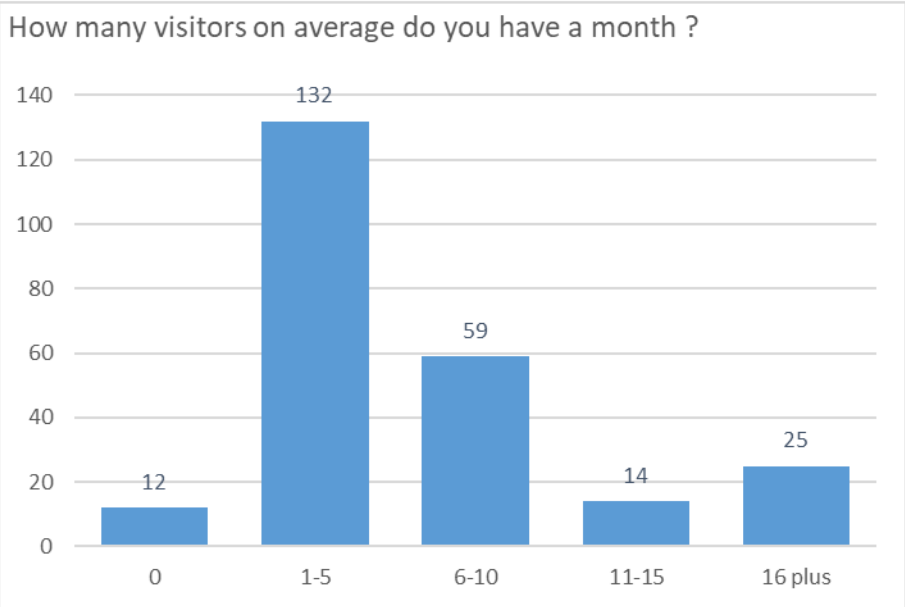
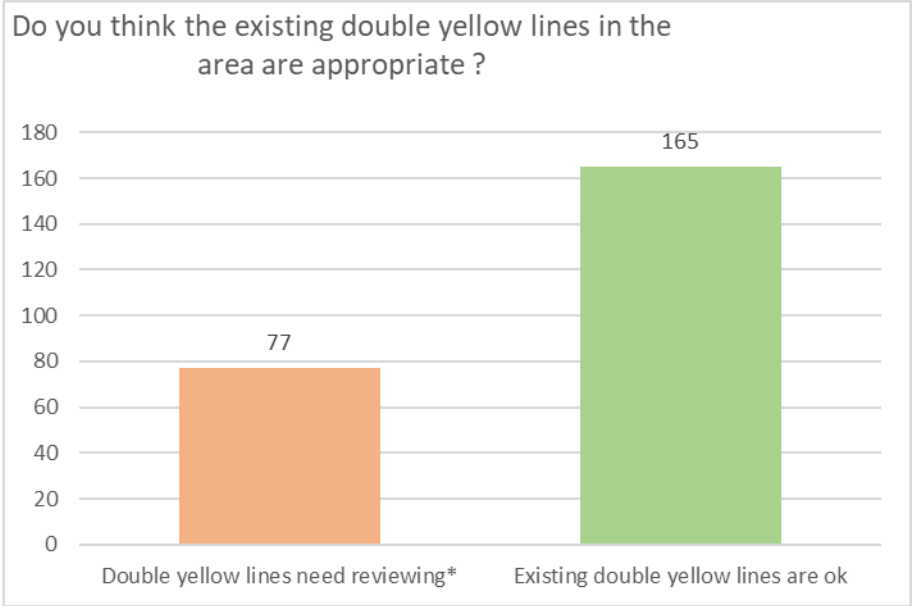
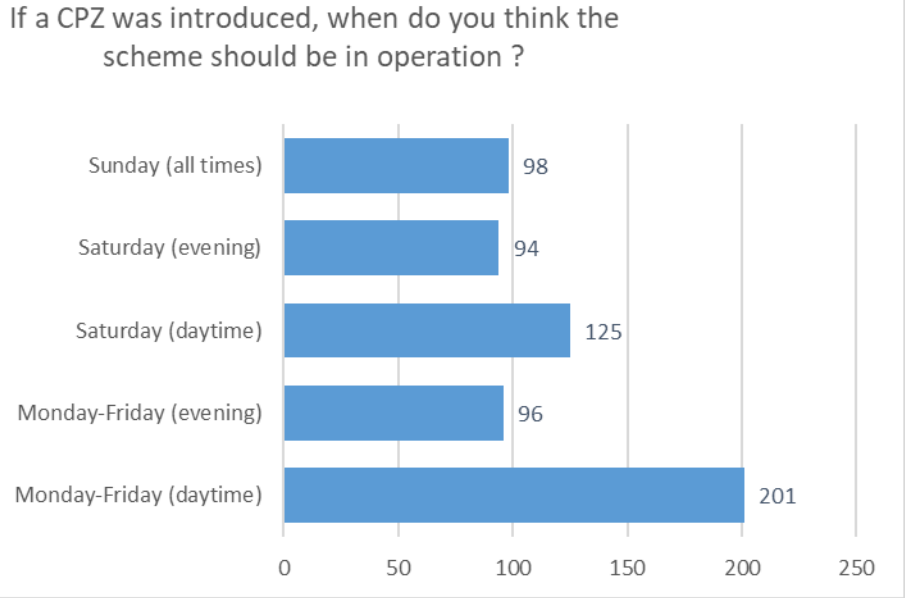
How many cars / vans are currently owned ?



Do you have access to private/off-street parking ?



CMDE5

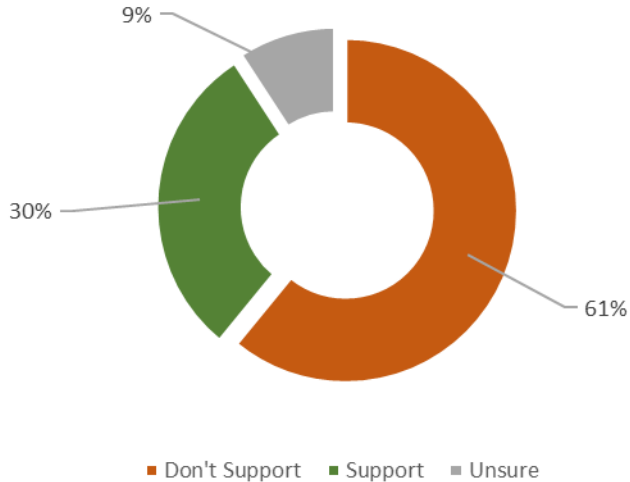


CMDE5

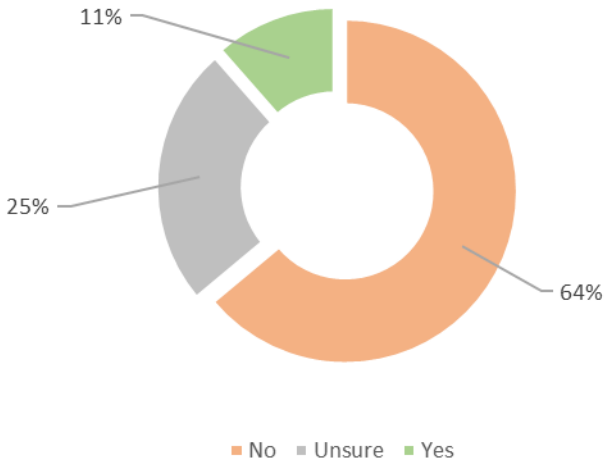
Upper Wolvercote (*online responses only*):

CMDE5

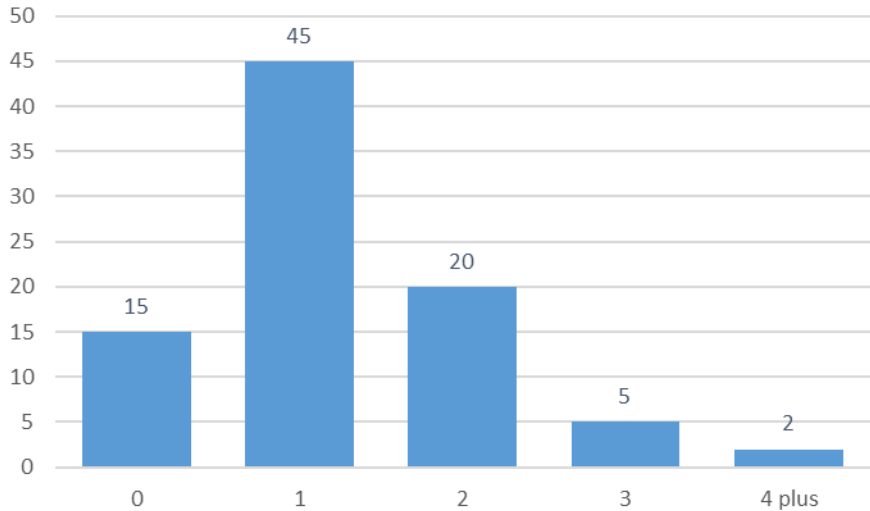
Do you support the introduction of a CPZ ?



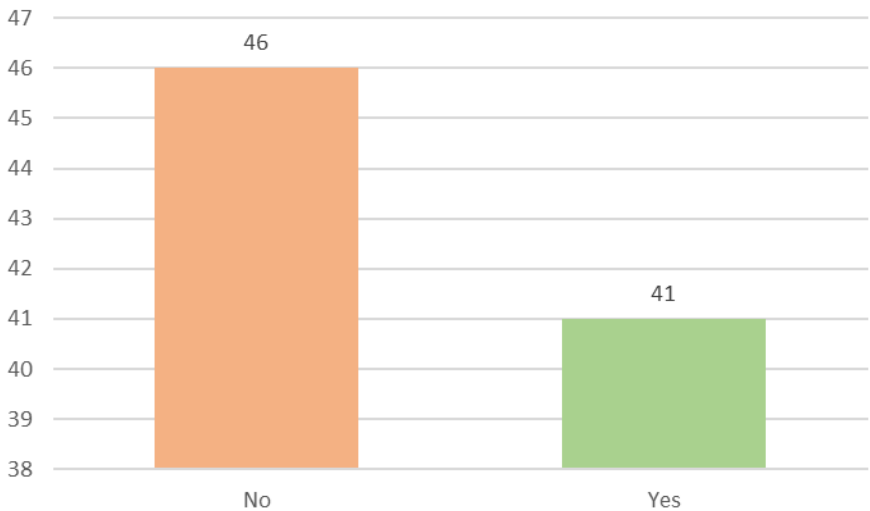
If not, do you think one may be necessary in future ?



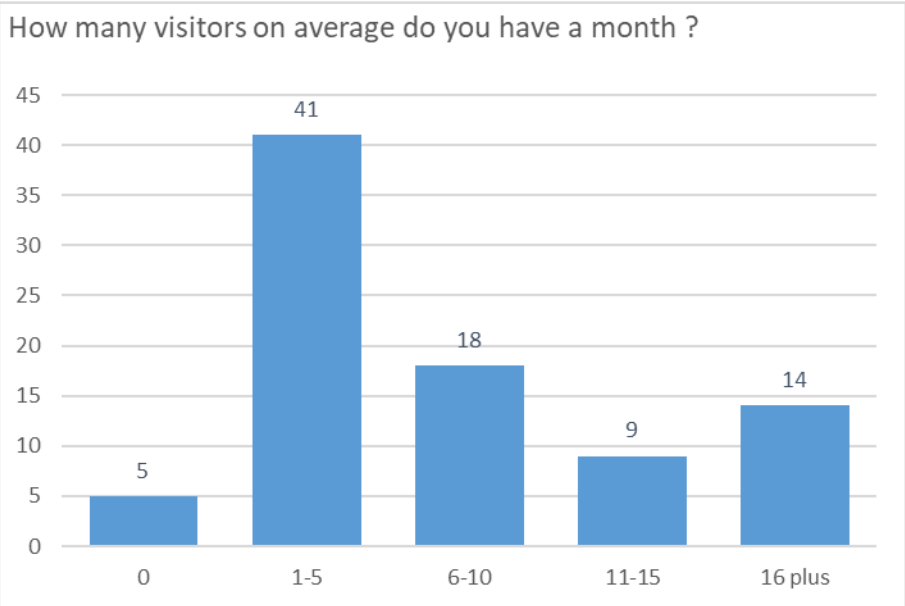
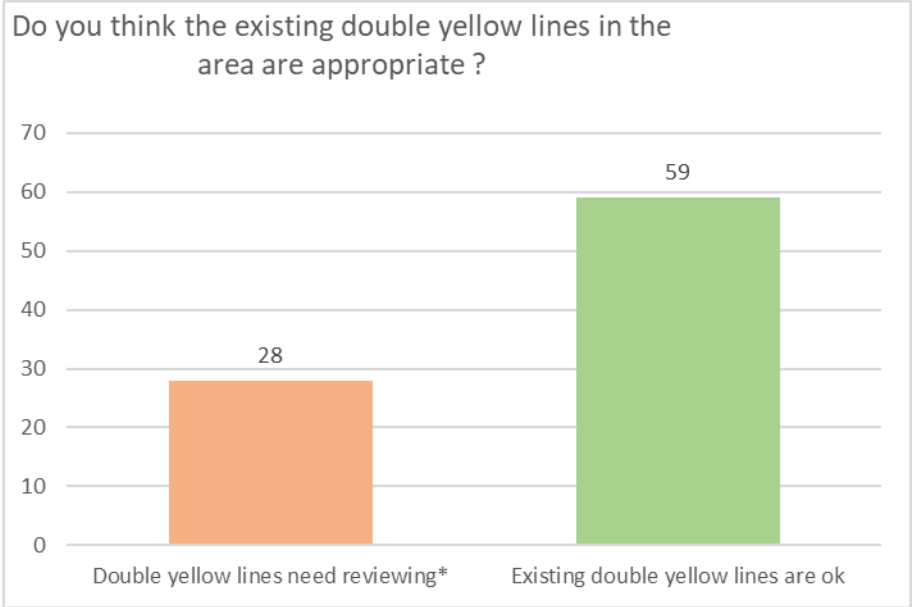
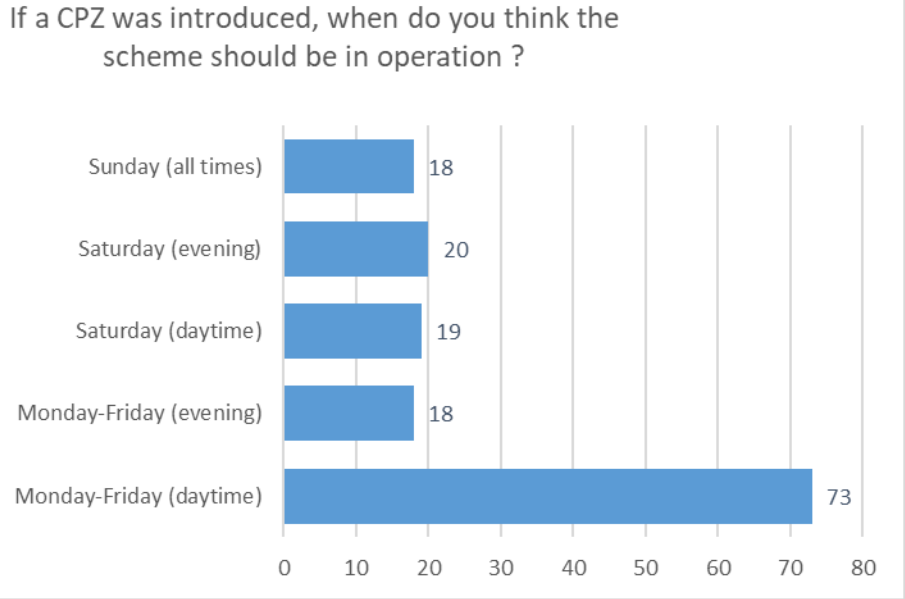
How many cars / vans are currently owned ?



Do you have access to private/off-street parking ?



CMDE5



CMDE5